

# Generalization

MLAI: Week 6

Neil D. Lawrence

Department of Computer Science  
Sheffield University

4th November 2014

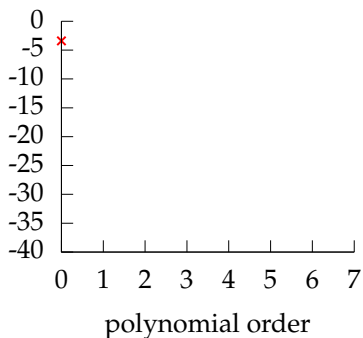
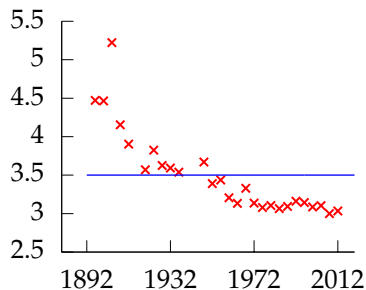
# Review

- ▶ Last time: Looked at univariate and multivariate linear regression.
- ▶ Showed how to maximize the likelihood of a multivariate model.
- ▶ Introduced basis functions to make the model non-linear.

# Outline

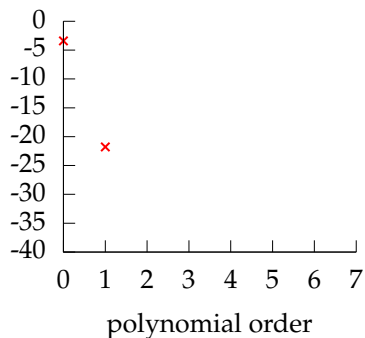
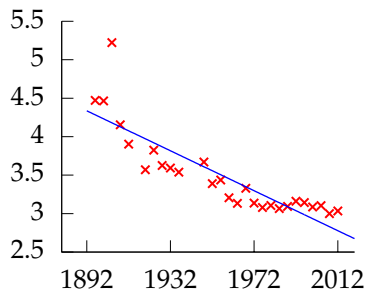
Generalization

# Polynomial Fits to Olympics Data



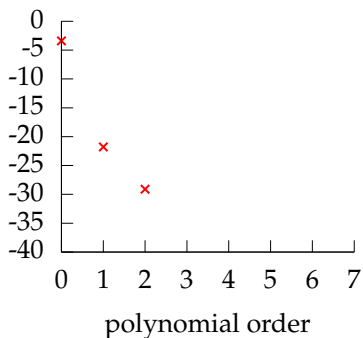
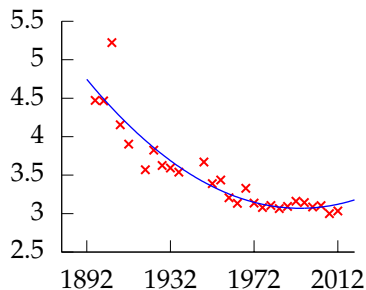
*Left: fit to data, Right: model error.* Polynomial order 0, model error -3.3989,  $\sigma^2 = 0.286$ ,  $\sigma = 0.535$ .

# Polynomial Fits to Olympics Data



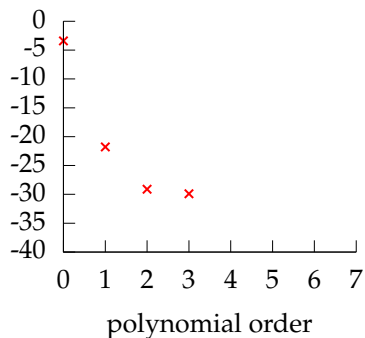
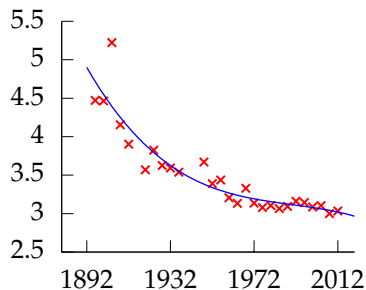
*Left: fit to data, Right: model error.* Polynomial order 1, model error  $-21.772$ ,  $\sigma^2 = 0.0733$ ,  $\sigma = 0.271$ .

# Polynomial Fits to Olympics Data



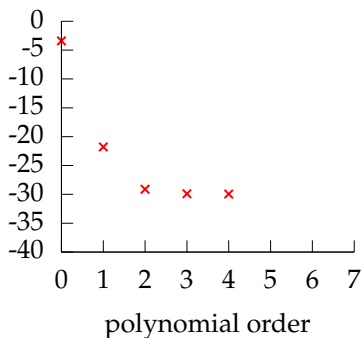
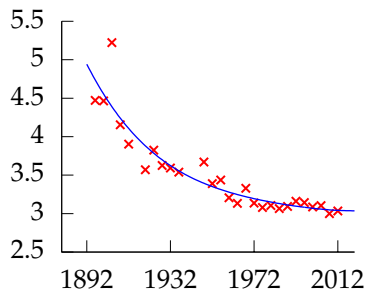
*Left: fit to data, Right: model error. Polynomial order 2, model error -29.101,  $\sigma^2 = 0.0426$ ,  $\sigma = 0.206$ .*

# Polynomial Fits to Olympics Data



*Left: fit to data, Right: model error. Polynomial order 3, model error -29.907,  $\sigma^2 = 0.0401$ ,  $\sigma = 0.200$ .*

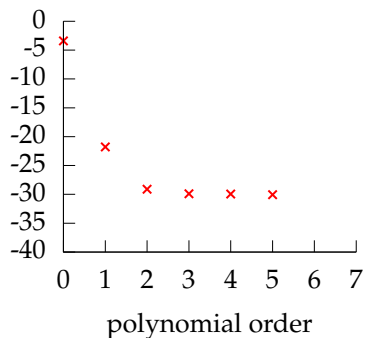
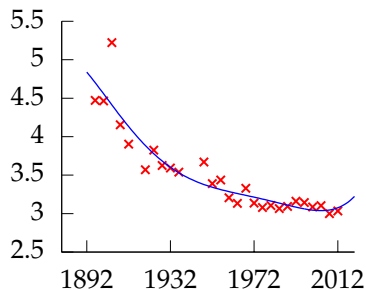
## Polynomial Fits to Olympics Data



*Left: fit to data, Right: model error.* Polynomial order 4, model error -29.943,  $\sigma^2 = 0.0400$ ,  $\sigma = 0.200$ .

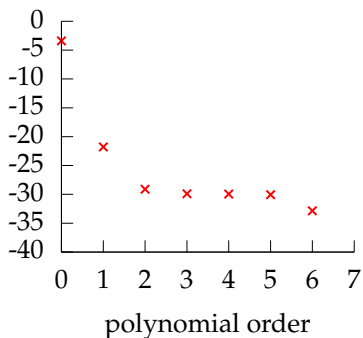
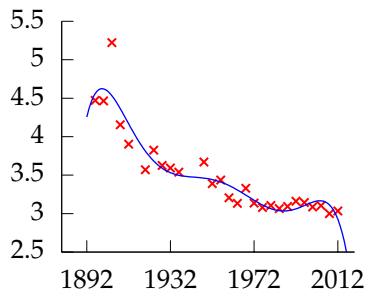


## Polynomial Fits to Olympics Data



*Left: fit to data, Right: model error. Polynomial order 5, model error -30.056,  $\sigma^2 = 0.0397$ ,  $\sigma = 0.199$ .*

# Polynomial Fits to Olympics Data



*Left: fit to data, Right: model error.* Polynomial order 6, model error  $-32.866$ ,  $\sigma^2 = 0.0322$ ,  $\sigma = 0.180$ .

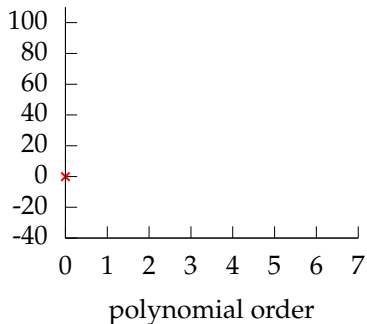
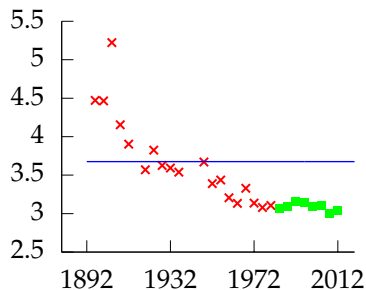
# Overfitting

- ▶ Increase number of basis functions, we obtain a better 'fit' to the data.
- ▶ How will the model perform on previously unseen data?

# Training and Test Sets

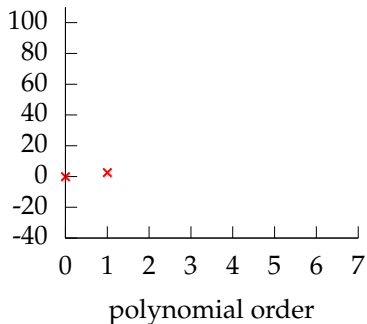
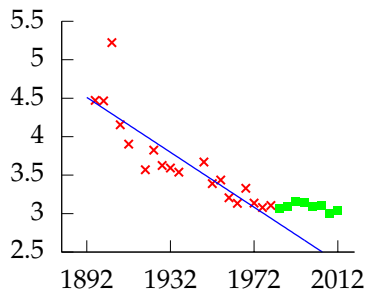
- ▶ We call the data used for fitting the model the 'training set'.
- ▶ Data not used for training, but when the model is applied 'in the field' is called the 'test data'.
- ▶ Challenge for generalization is to ensure a good performance on test data given only training data.

# Validation Set



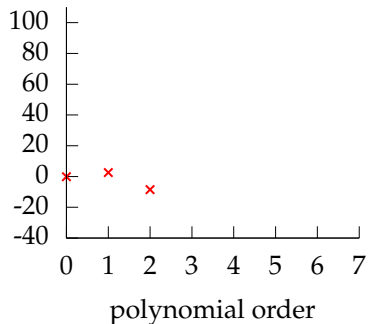
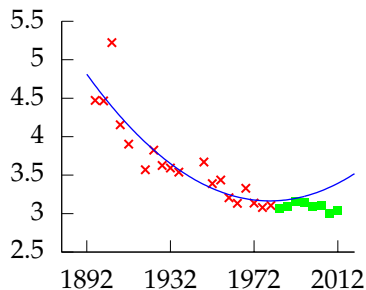
*Left: fit to data, Right: model error. Polynomial order 0, training error -1.8774, validation error -0.13132,  $\sigma^2 = 0.302$ ,  $\sigma = 0.549$ .*

## Validation Set



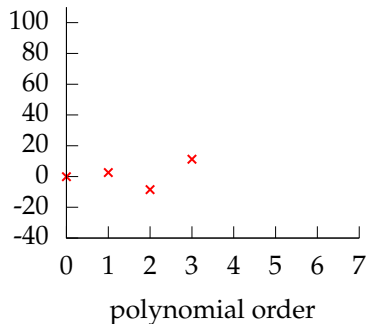
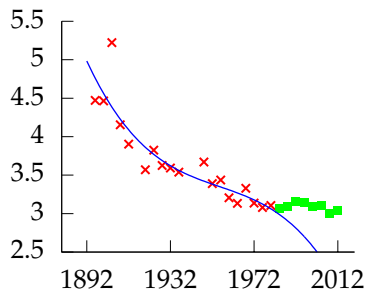
*Left: fit to data, Right: model error. Polynomial order 1, training error -15.325, validation error 2.5863,  $\sigma^2 = 0.0733$ ,  $\sigma = 0.271$ .*

# Validation Set



*Left: fit to data, Right: model error. Polynomial order 2, training error -17.579, validation error -8.4831,  $\sigma^2 = 0.0578$ ,  $\sigma = 0.240$ .*

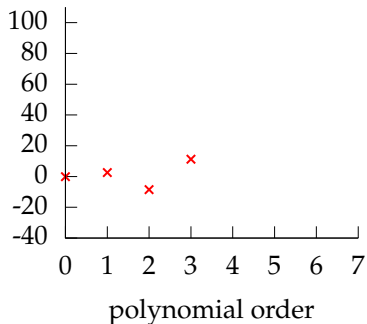
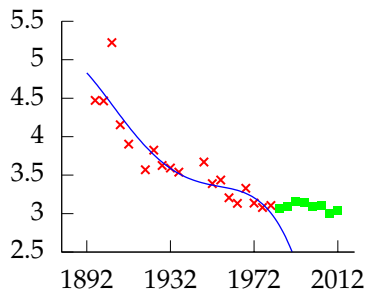
# Validation Set



Left: fit to data, Right: model error. Polynomial order 3, training error -18.064, validation error 11.27,  $\sigma^2 = 0.0549$ ,  $\sigma = 0.234$ .

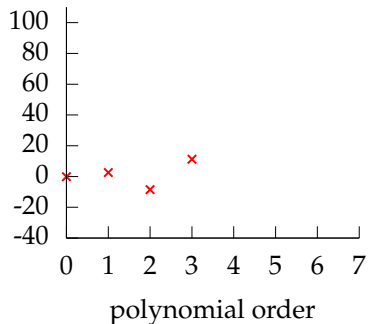
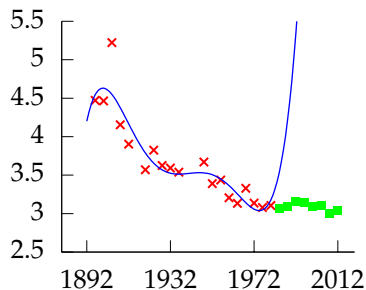


# Validation Set



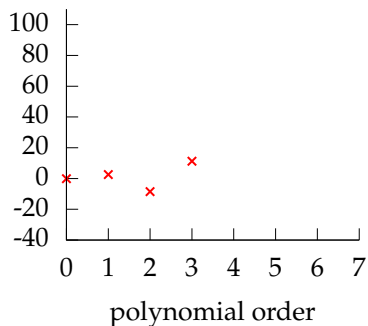
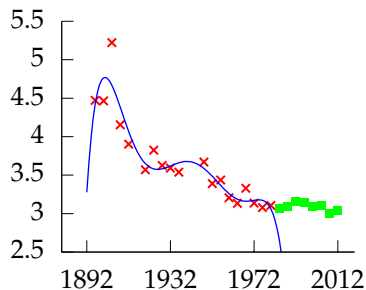
*Left: fit to data, Right: model error. Polynomial order 4, training error -18.245, validation error 232.92,  $\sigma^2 = 0.0539$ ,  $\sigma = 0.232$ .*

# Validation Set



Left: fit to data, Right: model error. Polynomial order 5, training error -20.471, validation error 9898.1,  $\sigma^2 = 0.0426$ ,  $\sigma = 0.207$ .

# Validation Set

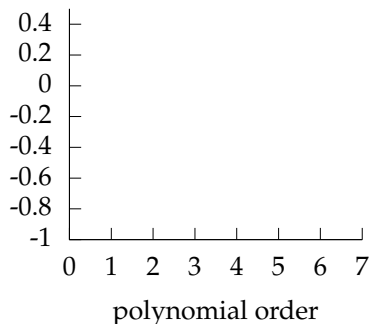
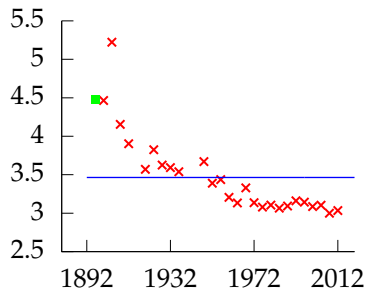


*Left: fit to data, Right: model error. Polynomial order 6, training error -22.881, validation error 67775,  $\sigma^2 = 0.0331$ ,  $\sigma = 0.182$ .*

## Leave One Out Error

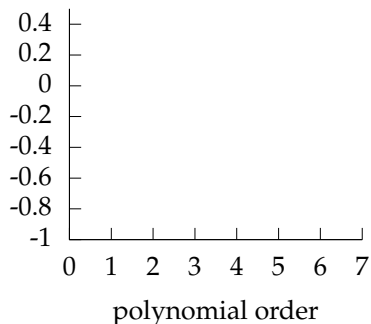
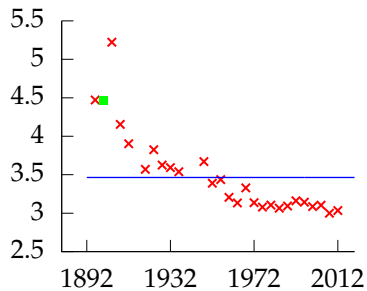
- ▶ Take training set and remove one point.
- ▶ Train on the remaining data.
- ▶ Compute the error on the point you removed (which wasn't in the training data).
- ▶ Do this for each point in the training set in turn.
- ▶ Average the resulting error. This is the leave one out error.

# Leave One Out Error



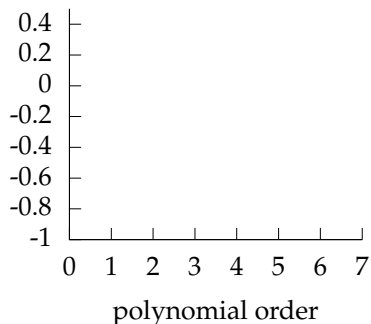
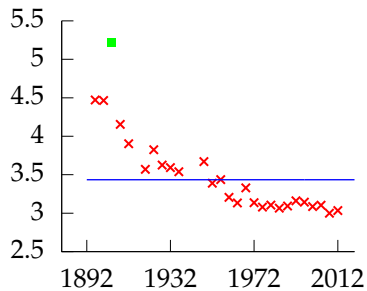
Polynomial order 0, training error -3.346, leave one out error 0.045811.

# Leave One Out Error



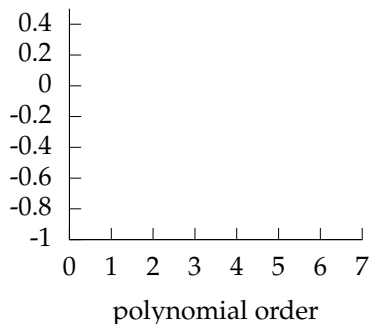
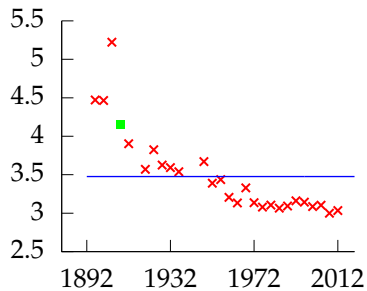
Polynomial order 0, training error -3.346, leave one out error 0.045811.

# Leave One Out Error



Polynomial order 0, training error -3.346, leave one out error 0.045811.

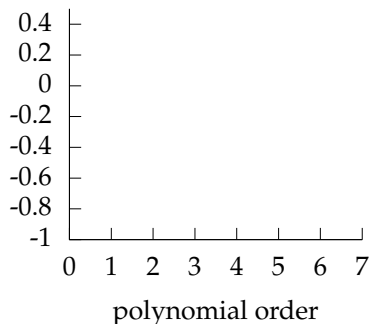
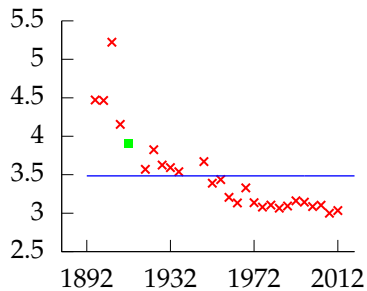
# Leave One Out Error



Polynomial order 0, training error -3.346, leave one out error 0.045811.

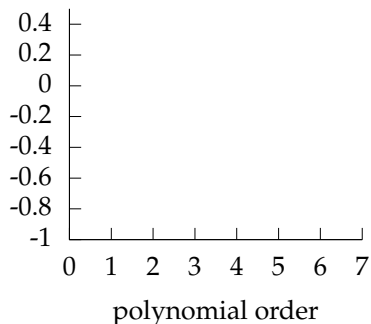
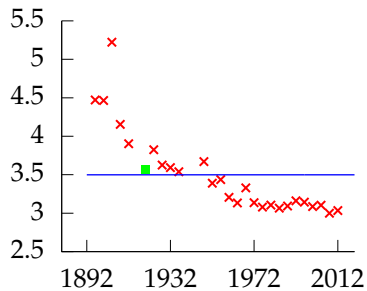


# Leave One Out Error



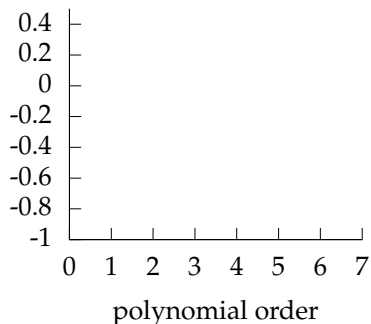
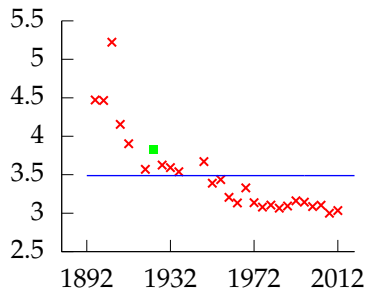
Polynomial order 0, training error -3.346, leave one out error 0.045811.

# Leave One Out Error



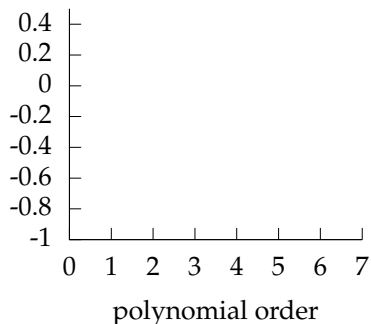
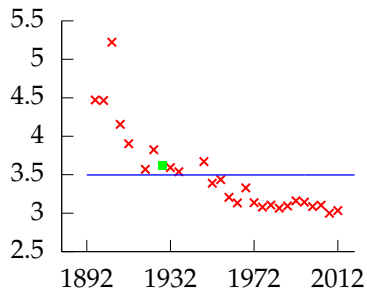
Polynomial order 0, training error -3.346, leave one out error 0.045811.

# Leave One Out Error



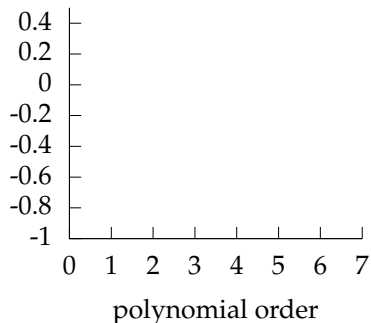
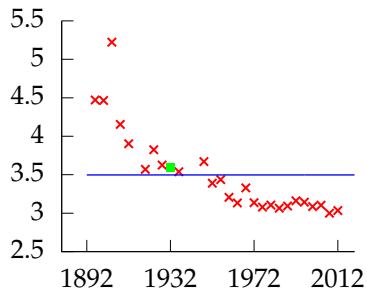
Polynomial order 0, training error -3.346, leave one out error 0.045811.

# Leave One Out Error



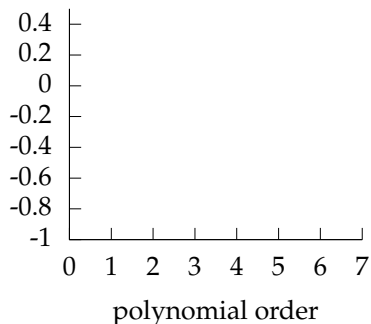
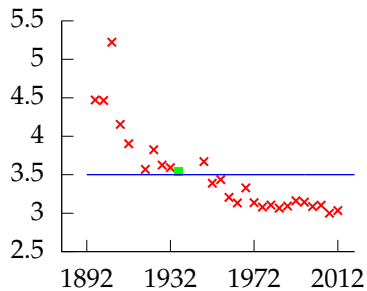
Polynomial order 0, training error -3.346, leave one out error 0.045811.

# Leave One Out Error



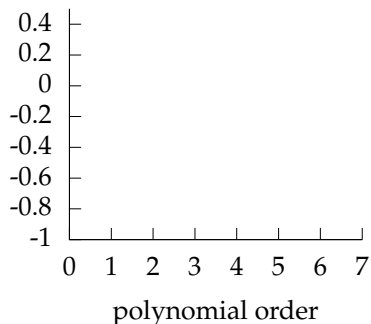
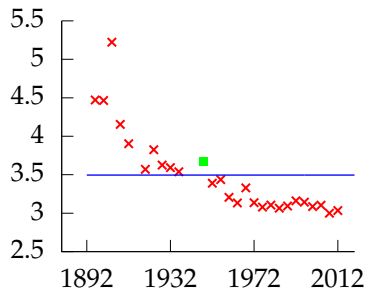
Polynomial order 0, training error -3.346, leave one out error 0.045811.

# Leave One Out Error



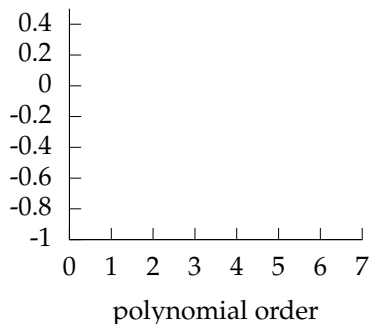
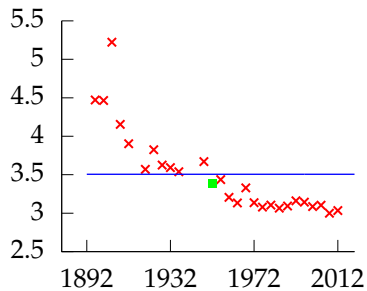
Polynomial order 0, training error -3.346, leave one out error 0.045811.

# Leave One Out Error



Polynomial order 0, training error -3.346, leave one out error 0.045811.

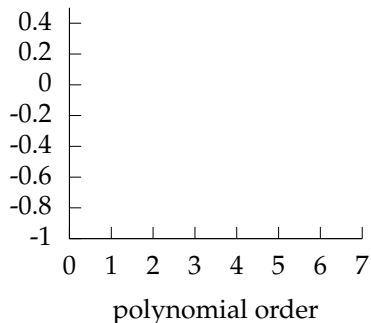
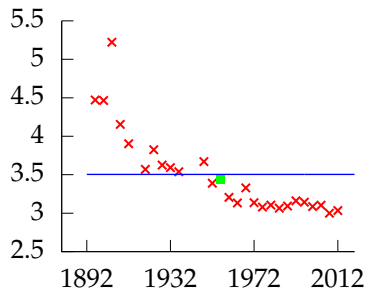
# Leave One Out Error



Polynomial order 0, training error -3.346, leave one out error 0.045811.

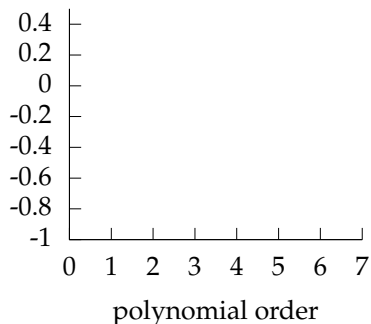
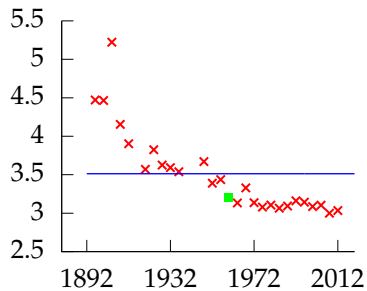


# Leave One Out Error



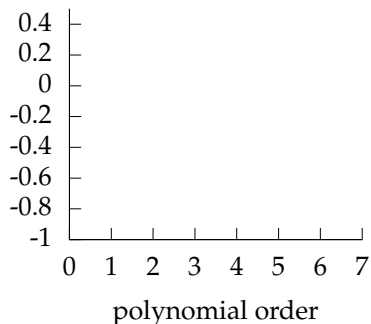
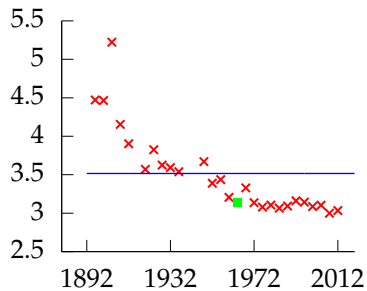
Polynomial order 0, training error -3.346, leave one out error 0.045811.

# Leave One Out Error



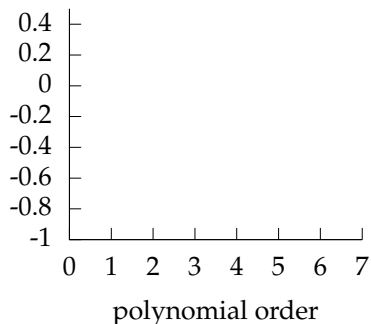
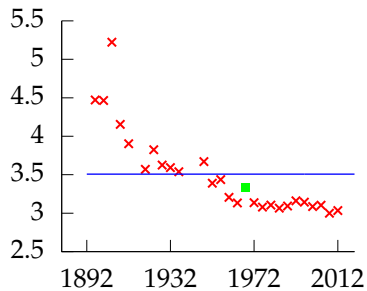
Polynomial order 0, training error -3.346, leave one out error 0.045811.

# Leave One Out Error



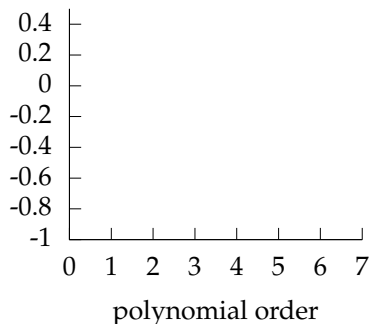
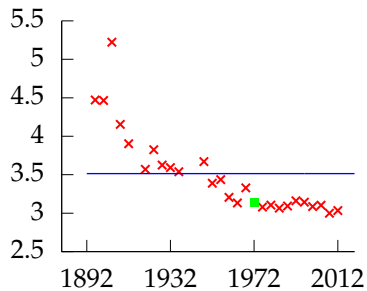
Polynomial order 0, training error -3.346, leave one out error 0.045811.

# Leave One Out Error



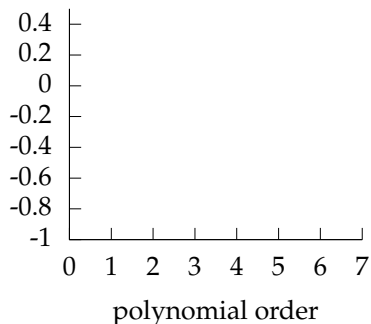
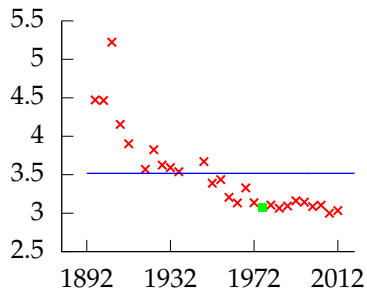
Polynomial order 0, training error -3.346, leave one out error 0.045811.

# Leave One Out Error



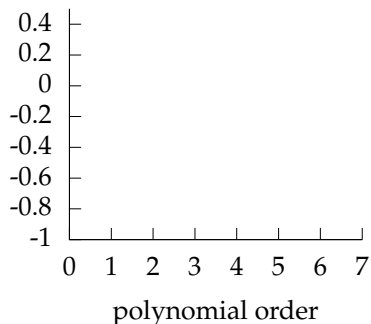
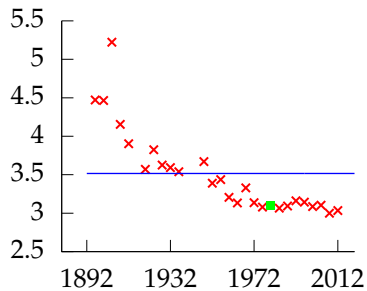
Polynomial order 0, training error -3.346, leave one out error 0.045811.

# Leave One Out Error



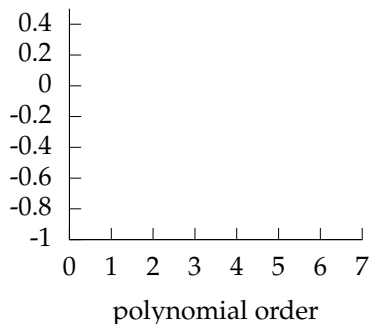
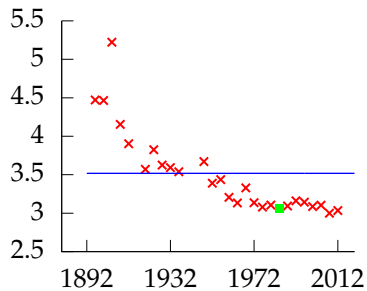
Polynomial order 0, training error -3.346, leave one out error 0.045811.

# Leave One Out Error



Polynomial order 0, training error -3.346, leave one out error 0.045811.

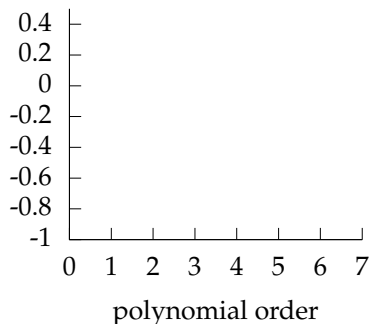
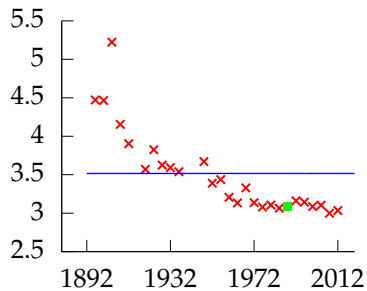
# Leave One Out Error



Polynomial order 0, training error -3.346, leave one out error 0.045811.

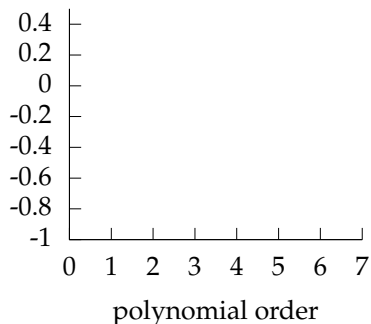
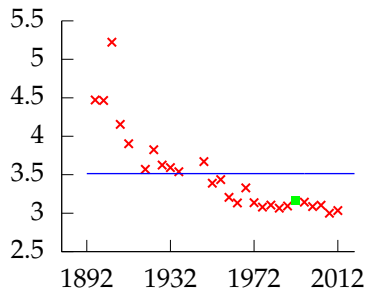


# Leave One Out Error



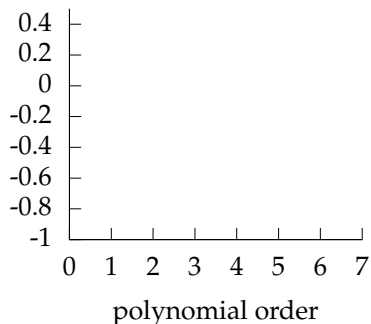
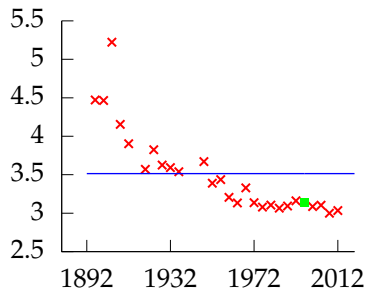
Polynomial order 0, training error -3.346, leave one out error 0.045811.

# Leave One Out Error



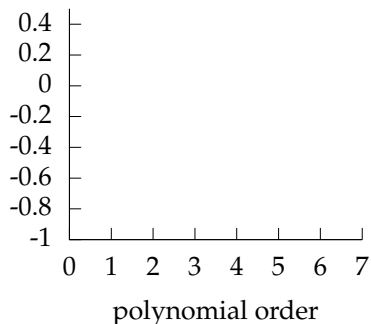
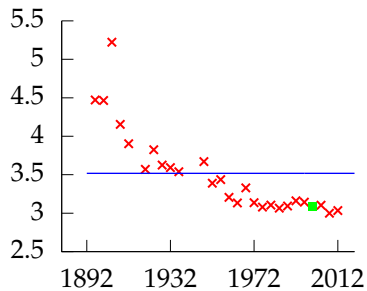
Polynomial order 0, training error -3.346, leave one out error 0.045811.

# Leave One Out Error



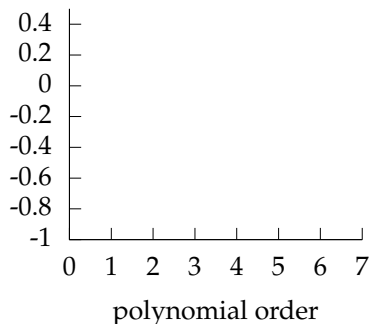
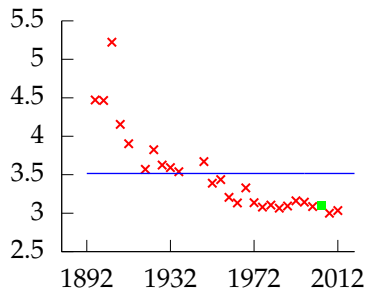
Polynomial order 0, training error -3.346, leave one out error 0.045811.

# Leave One Out Error



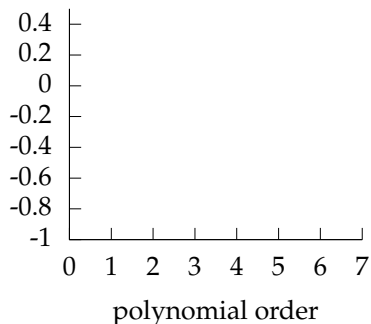
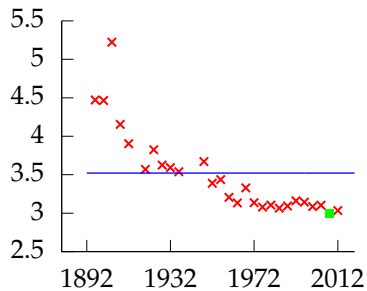
Polynomial order 0, training error -3.346, leave one out error 0.045811.

# Leave One Out Error



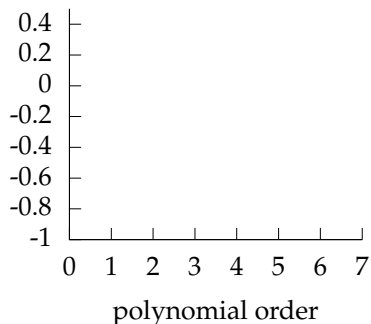
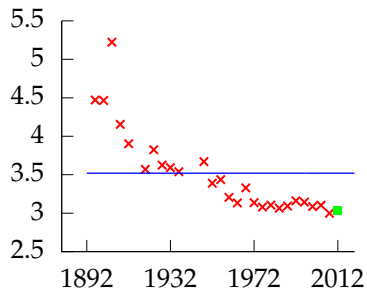
Polynomial order 0, training error -3.346, leave one out error 0.045811.

# Leave One Out Error



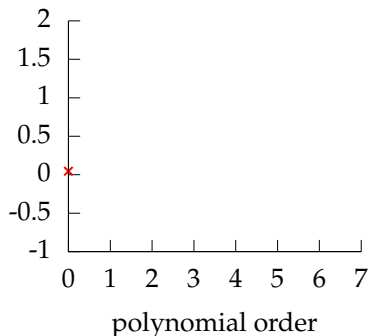
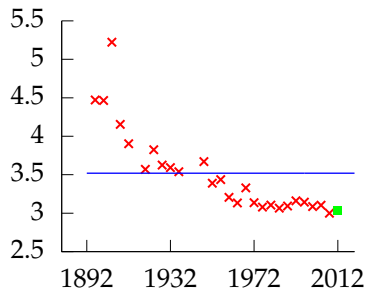
Polynomial order 0, training error -3.346, leave one out error 0.045811.

# Leave One Out Error



Polynomial order 0, training error -3.346, leave one out error 0.045811.

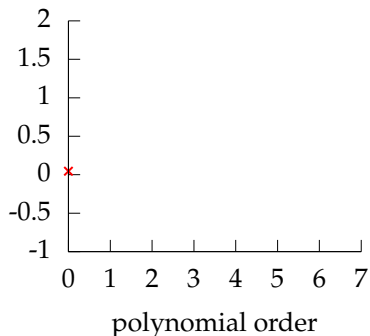
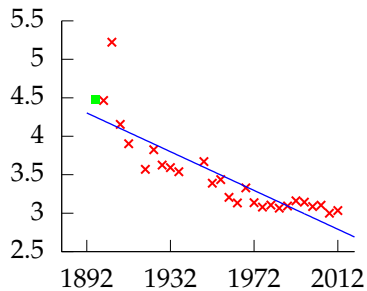
# Leave One Out Error



Polynomial order 0, training error -3.346, leave one out error 0.045811.

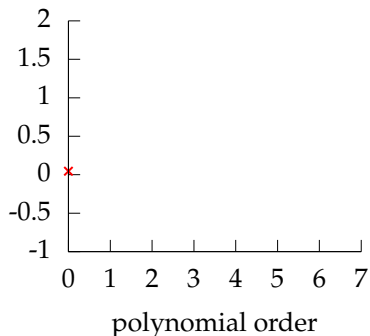
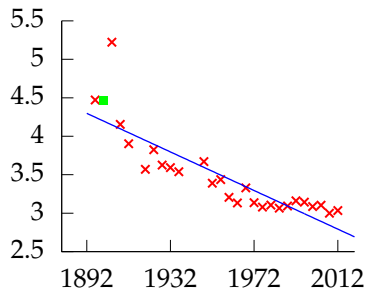


# Leave One Out Error



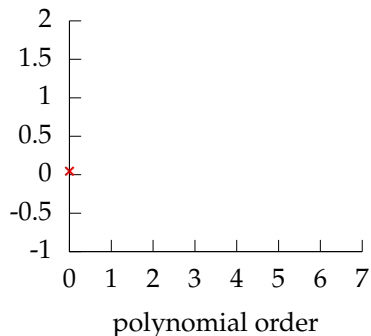
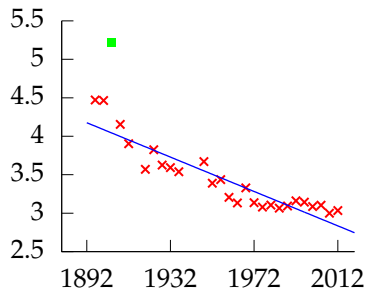
Polynomial order 1, training error -21.183, leave one out error -0.15413.

# Leave One Out Error



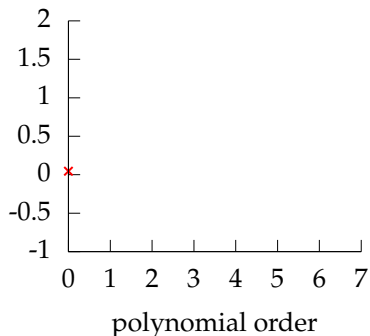
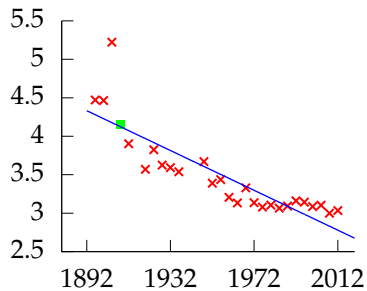
Polynomial order 1, training error -21.183, leave one out error -0.15413.

# Leave One Out Error



Polynomial order 1, training error -21.183, leave one out error -0.15413.

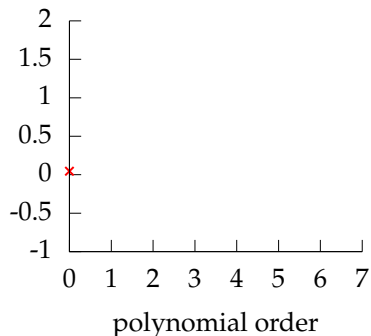
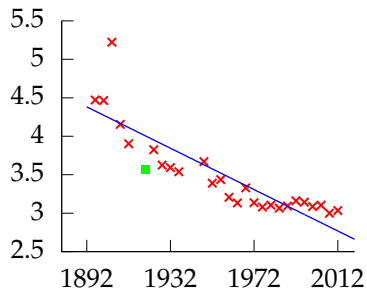
# Leave One Out Error



Polynomial order 1, training error -21.183, leave one out error -0.15413.

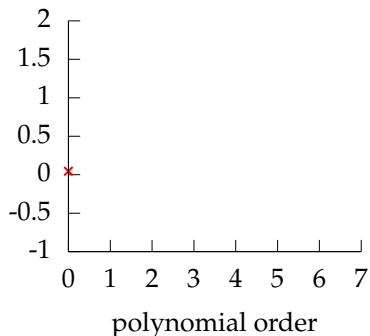
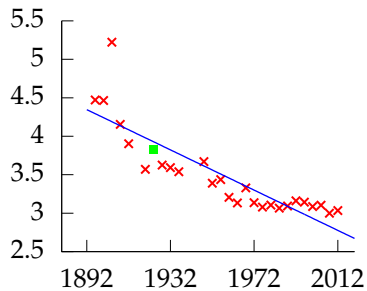


# Leave One Out Error



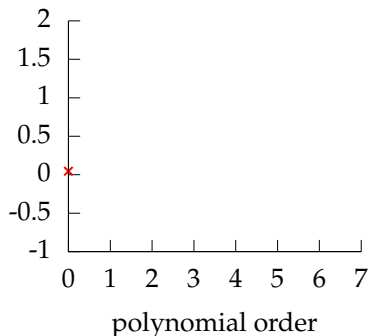
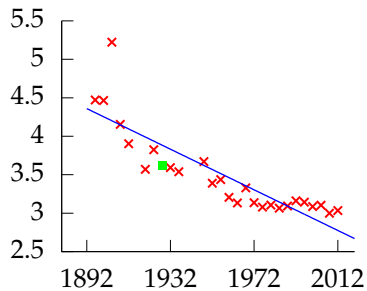
Polynomial order 1, training error -21.183, leave one out error -0.15413.

# Leave One Out Error



Polynomial order 1, training error -21.183, leave one out error -0.15413.

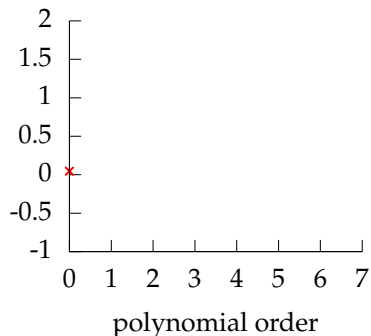
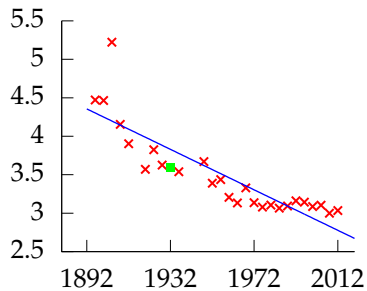
# Leave One Out Error



Polynomial order 1, training error -21.183, leave one out error -0.15413.

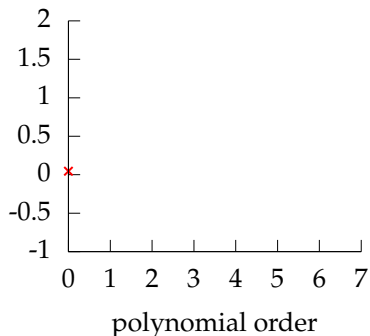
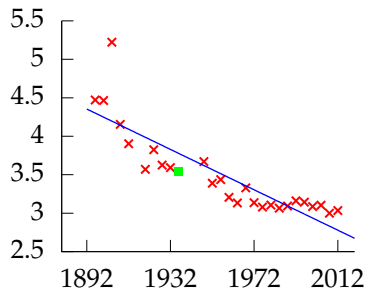


# Leave One Out Error



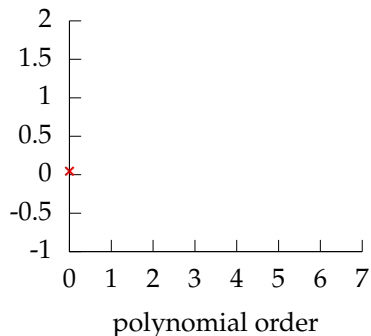
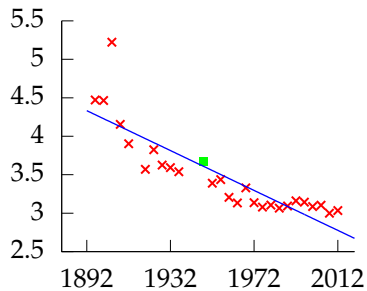
Polynomial order 1, training error -21.183, leave one out error -0.15413.

# Leave One Out Error



Polynomial order 1, training error -21.183, leave one out error -0.15413.

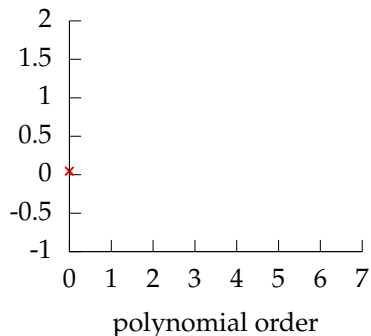
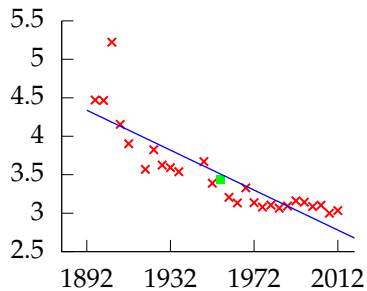
# Leave One Out Error



Polynomial order 1, training error -21.183, leave one out error -0.15413.

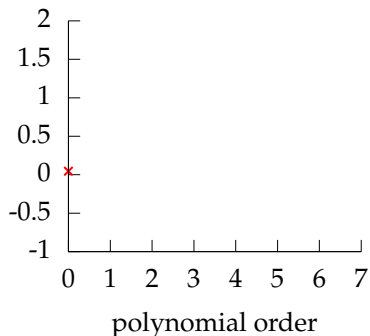
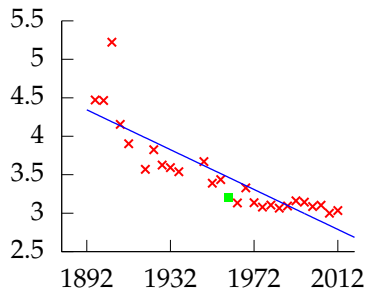


# Leave One Out Error



Polynomial order 1, training error -21.183, leave one out error -0.15413.

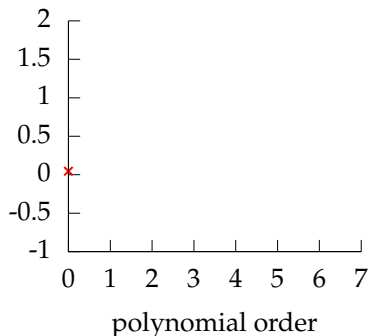
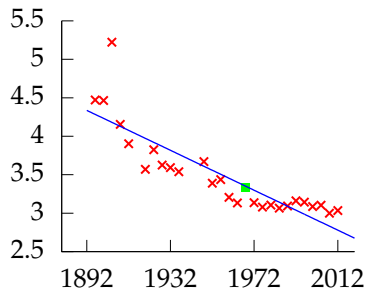
# Leave One Out Error



Polynomial order 1, training error -21.183, leave one out error -0.15413.



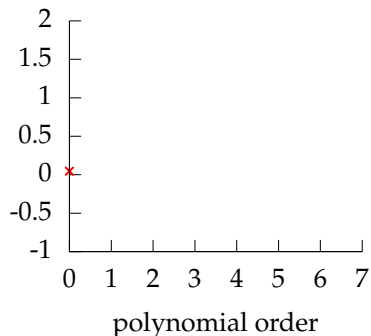
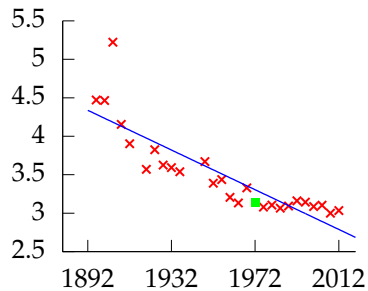
# Leave One Out Error



Polynomial order 1, training error -21.183, leave one out error -0.15413.

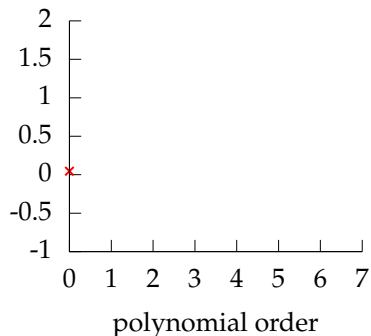
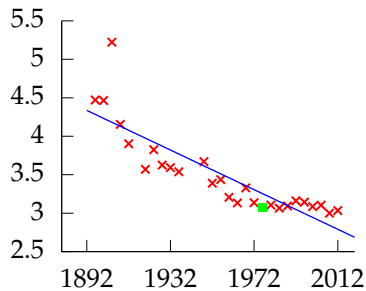


# Leave One Out Error



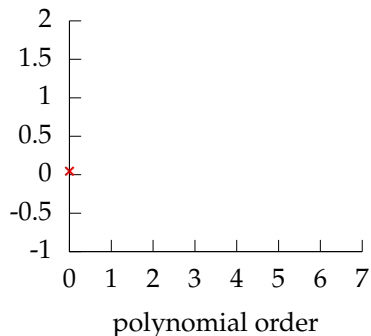
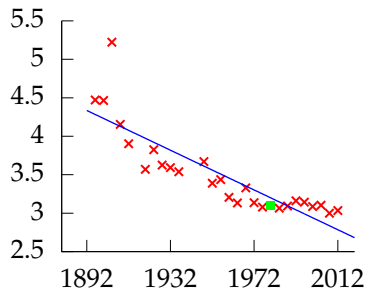
Polynomial order 1, training error -21.183, leave one out error -0.15413.

# Leave One Out Error



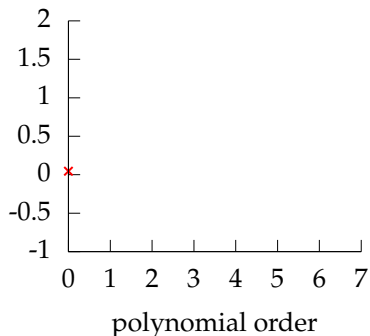
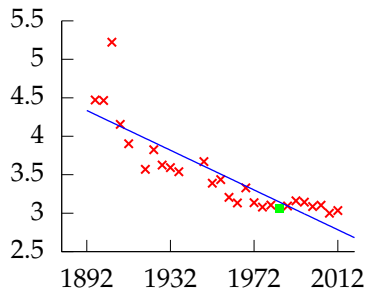
Polynomial order 1, training error -21.183, leave one out error -0.15413.

# Leave One Out Error



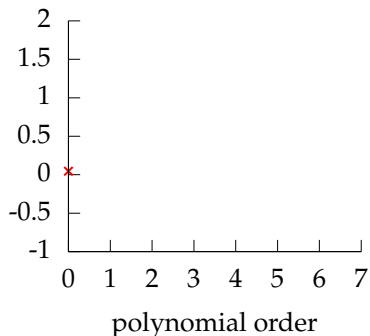
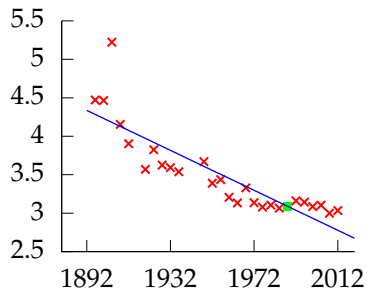
Polynomial order 1, training error -21.183, leave one out error -0.15413.

# Leave One Out Error



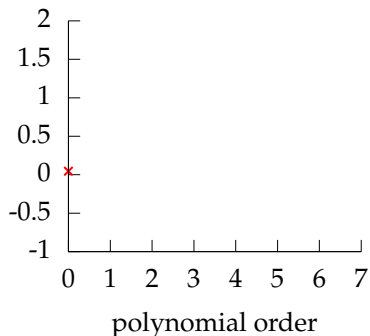
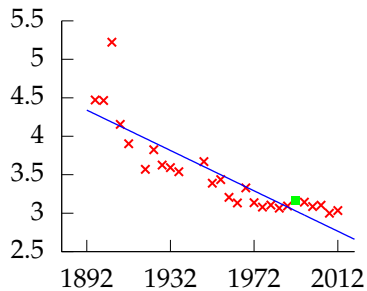
Polynomial order 1, training error -21.183, leave one out error -0.15413.

# Leave One Out Error



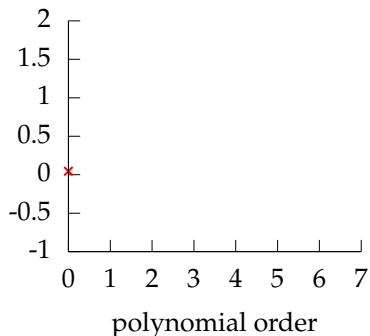
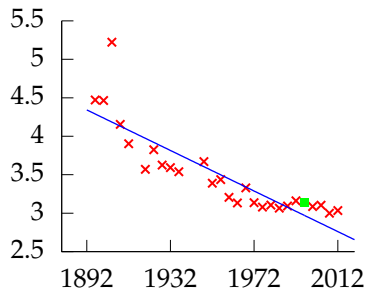
Polynomial order 1, training error -21.183, leave one out error -0.15413.

# Leave One Out Error



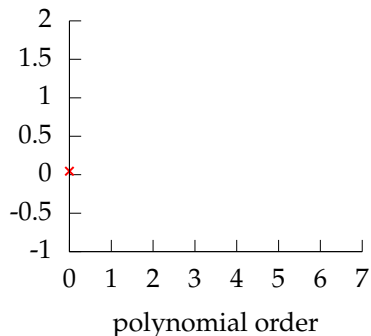
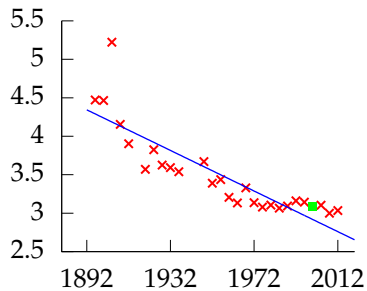
Polynomial order 1, training error -21.183, leave one out error -0.15413.

# Leave One Out Error



Polynomial order 1, training error -21.183, leave one out error -0.15413.

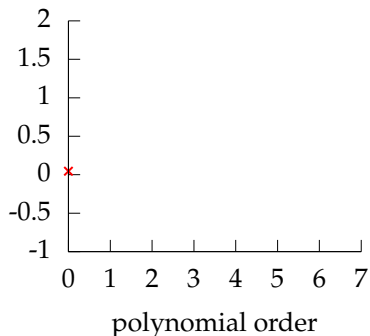
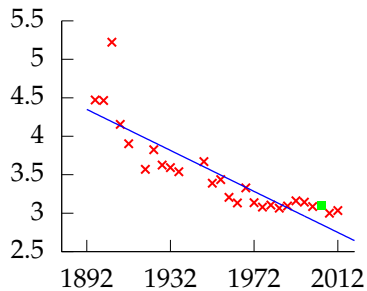
# Leave One Out Error



Polynomial order 1, training error -21.183, leave one out error -0.15413.

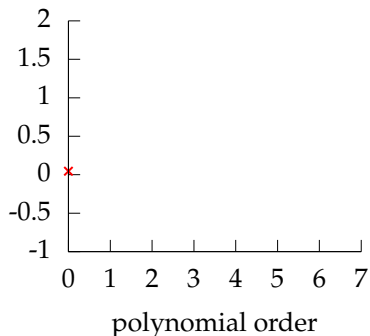
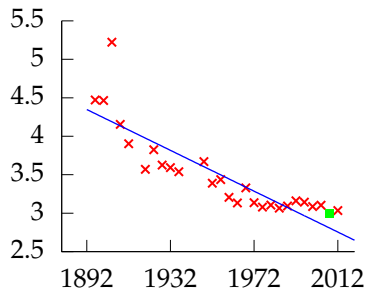


# Leave One Out Error



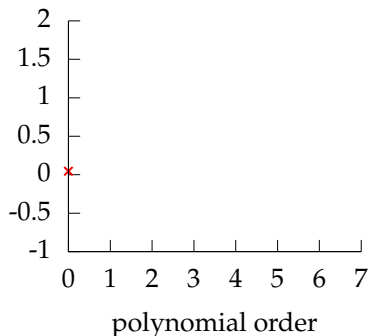
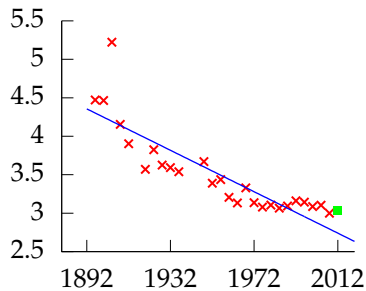
Polynomial order 1, training error -21.183, leave one out error -0.15413.

# Leave One Out Error



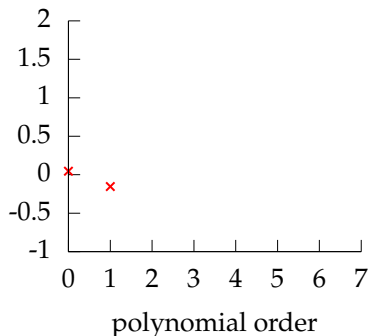
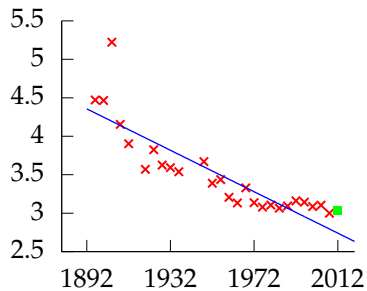
Polynomial order 1, training error -21.183, leave one out error -0.15413.

# Leave One Out Error



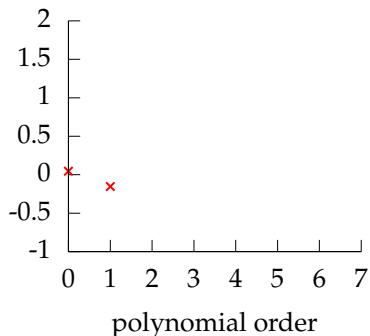
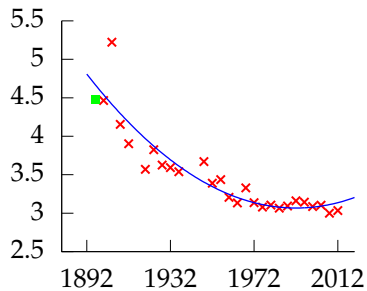
Polynomial order 1, training error -21.183, leave one out error -0.15413.

# Leave One Out Error



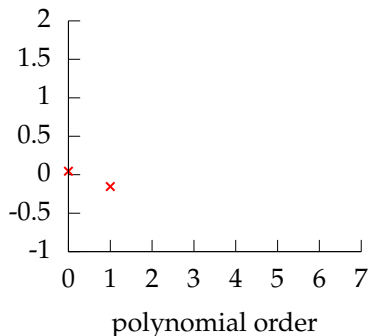
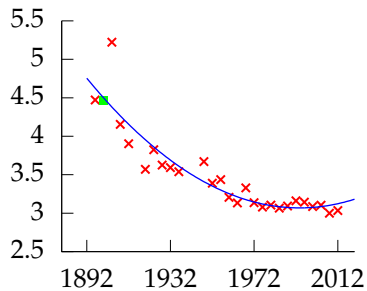
Polynomial order 1, training error -21.183, leave one out error -0.15413.

# Leave One Out Error



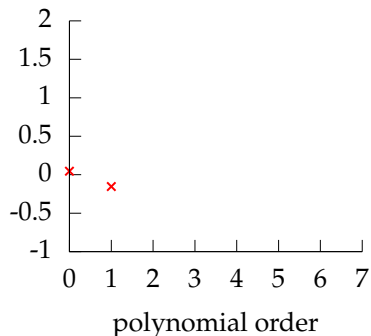
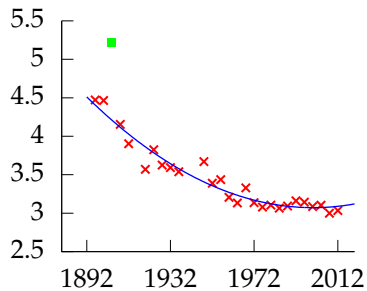
Polynomial order 2, training error -28.403, leave one out error 0.34669.

## Leave One Out Error



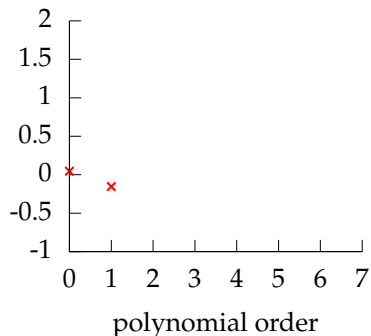
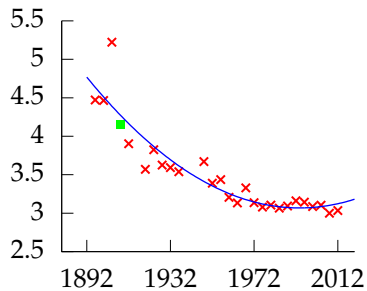
Polynomial order 2, training error -28.403, leave one out error 0.34669.

# Leave One Out Error



Polynomial order 2, training error -28.403, leave one out error 0.34669.

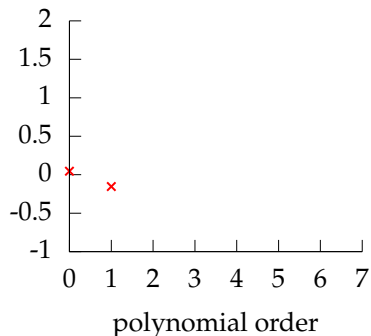
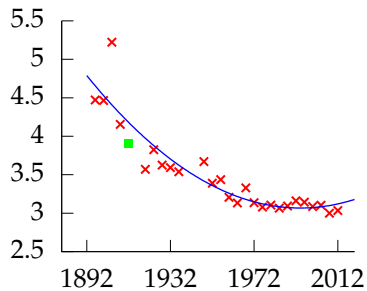
# Leave One Out Error



Polynomial order 2, training error -28.403, leave one out error 0.34669.

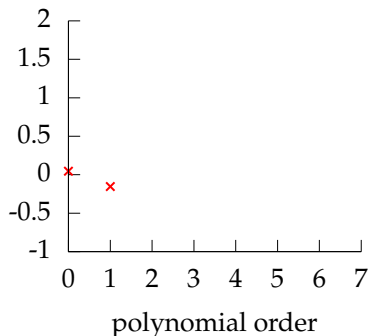
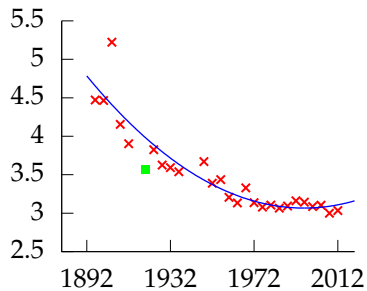


# Leave One Out Error



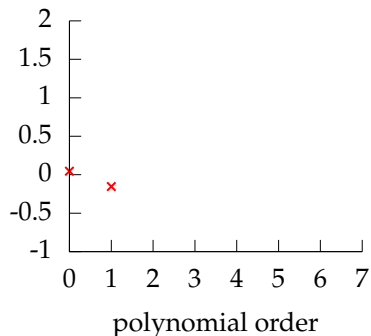
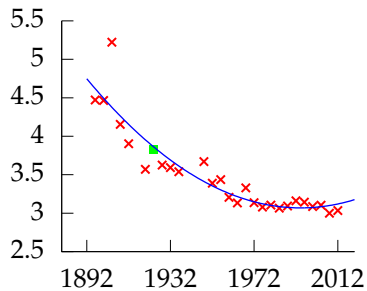
Polynomial order 2, training error -28.403, leave one out error 0.34669.

# Leave One Out Error



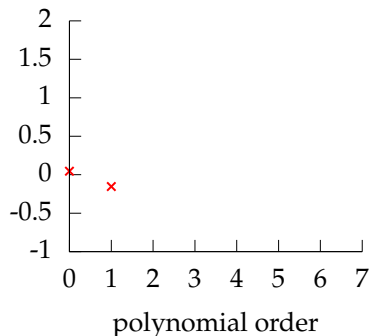
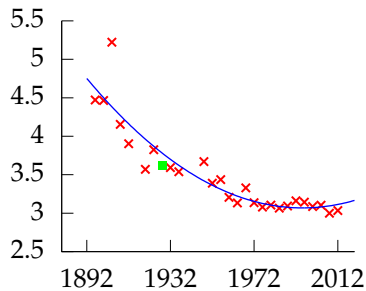
Polynomial order 2, training error -28.403, leave one out error 0.34669.

# Leave One Out Error



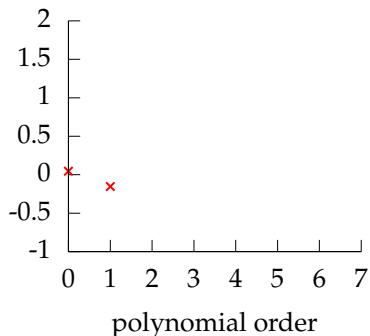
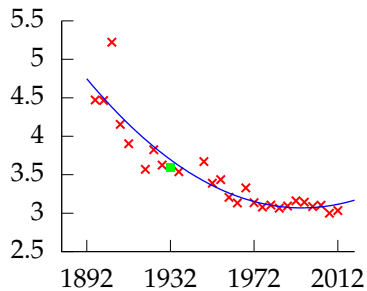
Polynomial order 2, training error -28.403, leave one out error 0.34669.

# Leave One Out Error



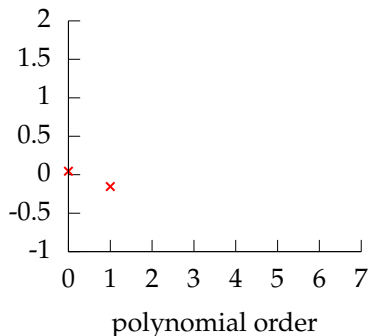
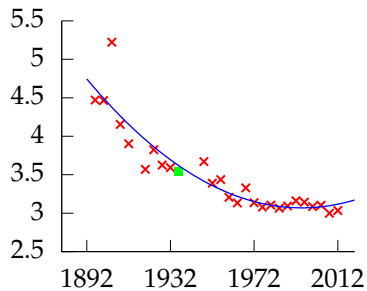
Polynomial order 2, training error -28.403, leave one out error 0.34669.

# Leave One Out Error



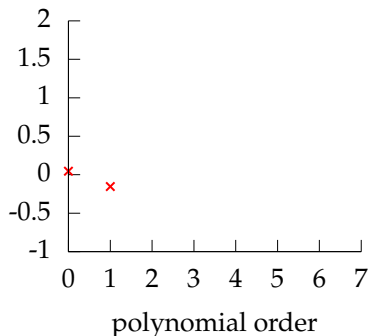
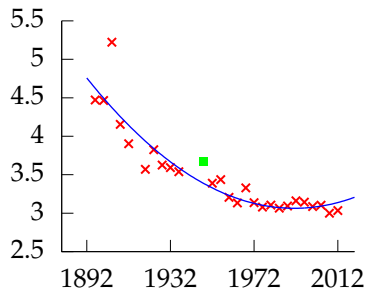
Polynomial order 2, training error -28.403, leave one out error 0.34669.

# Leave One Out Error



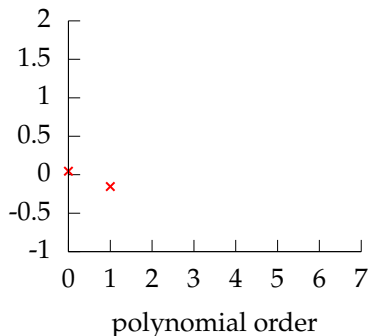
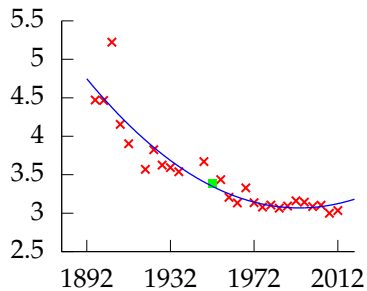
Polynomial order 2, training error -28.403, leave one out error 0.34669.

# Leave One Out Error



Polynomial order 2, training error -28.403, leave one out error 0.34669.

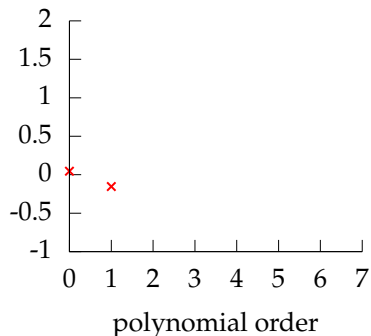
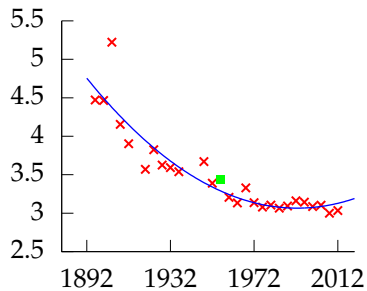
# Leave One Out Error



Polynomial order 2, training error -28.403, leave one out error 0.34669.

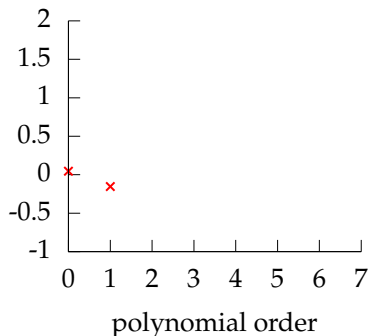
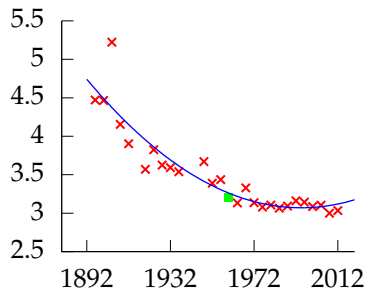


# Leave One Out Error



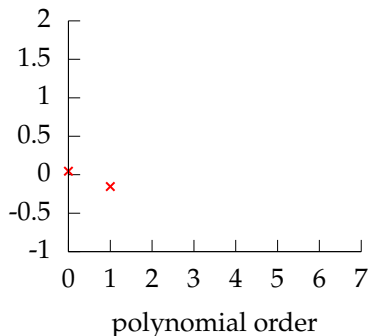
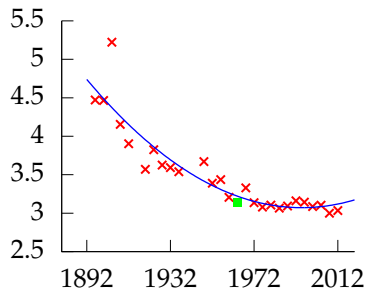
Polynomial order 2, training error -28.403, leave one out error 0.34669.

# Leave One Out Error



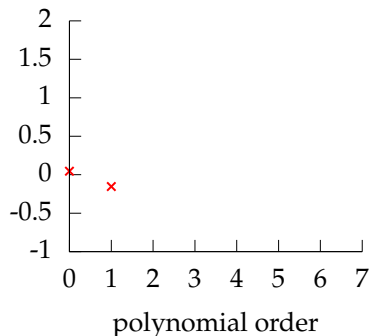
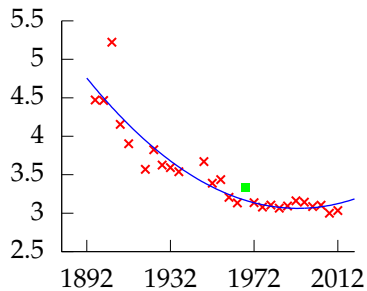
Polynomial order 2, training error -28.403, leave one out error 0.34669.

# Leave One Out Error



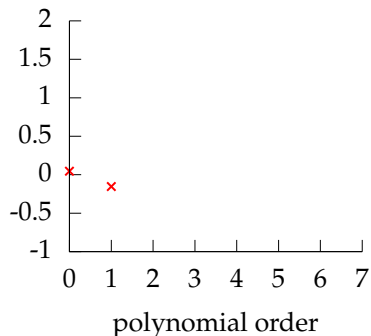
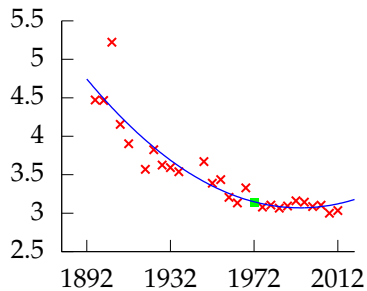
Polynomial order 2, training error -28.403, leave one out error 0.34669.

# Leave One Out Error



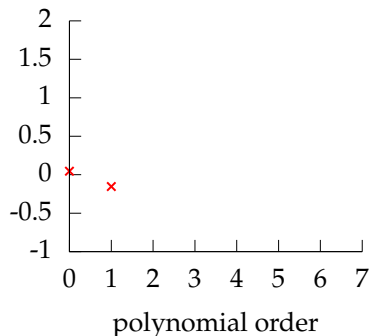
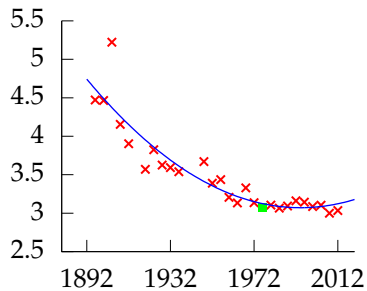
Polynomial order 2, training error -28.403, leave one out error 0.34669.

# Leave One Out Error



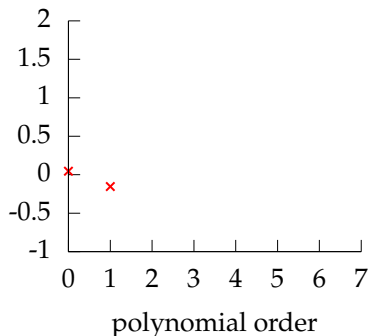
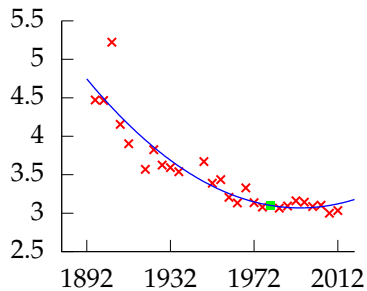
Polynomial order 2, training error -28.403, leave one out error 0.34669.

# Leave One Out Error



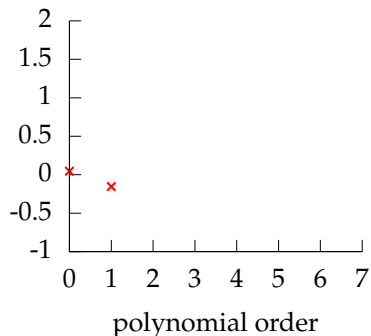
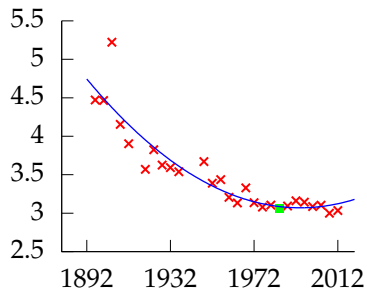
Polynomial order 2, training error -28.403, leave one out error 0.34669.

# Leave One Out Error



Polynomial order 2, training error -28.403, leave one out error 0.34669.

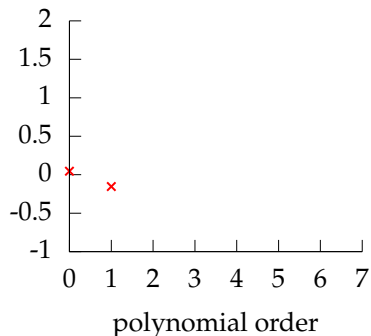
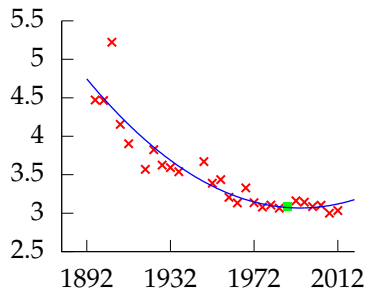
# Leave One Out Error



Polynomial order 2, training error -28.403, leave one out error 0.34669.

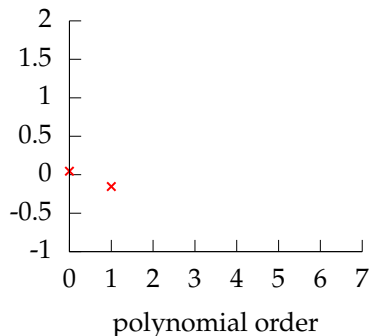
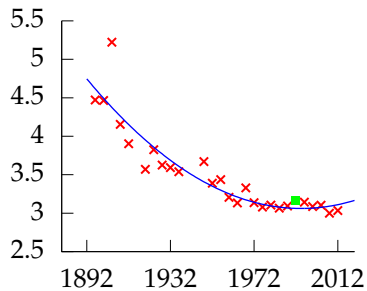


# Leave One Out Error



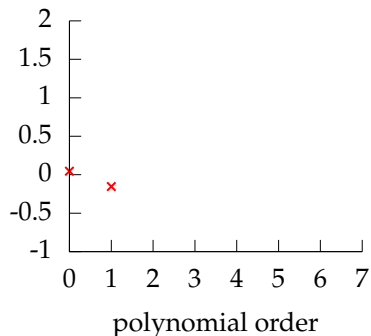
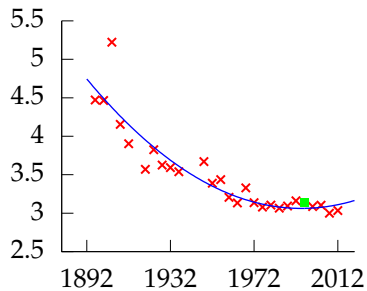
Polynomial order 2, training error -28.403, leave one out error 0.34669.

# Leave One Out Error



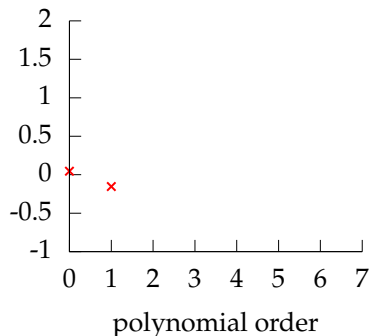
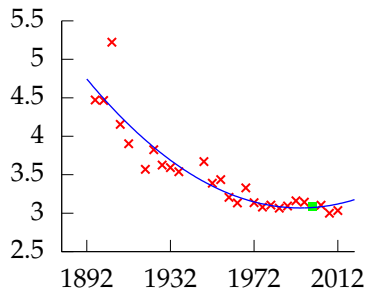
Polynomial order 2, training error -28.403, leave one out error 0.34669.

# Leave One Out Error



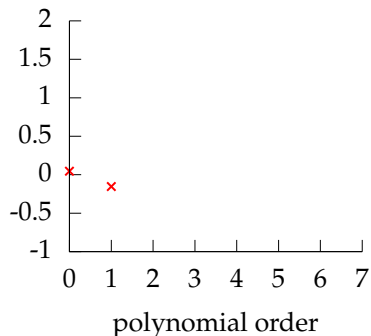
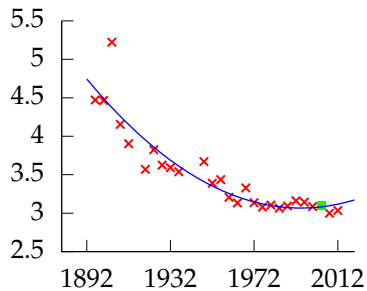
Polynomial order 2, training error -28.403, leave one out error 0.34669.

# Leave One Out Error



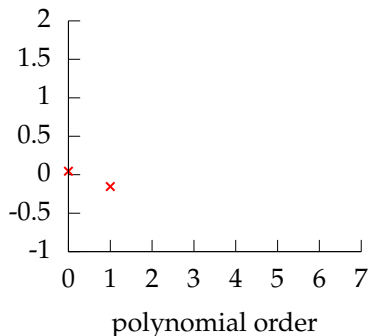
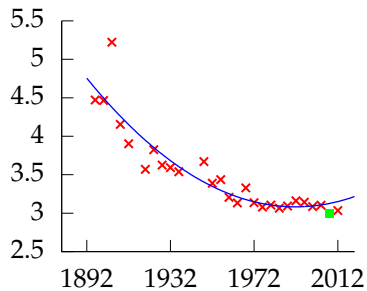
Polynomial order 2, training error -28.403, leave one out error 0.34669.

# Leave One Out Error



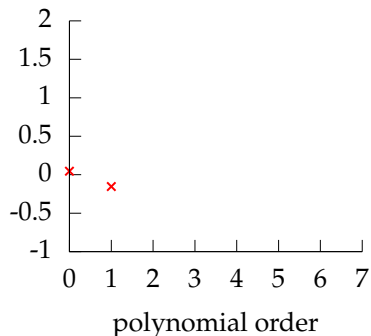
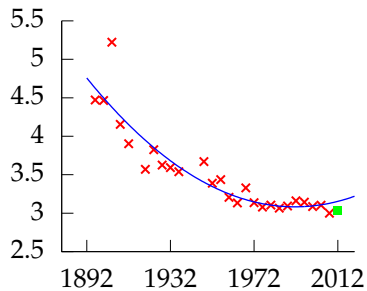
Polynomial order 2, training error -28.403, leave one out error 0.34669.

# Leave One Out Error



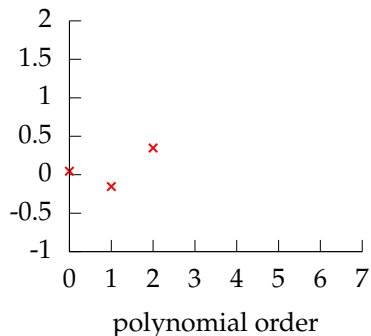
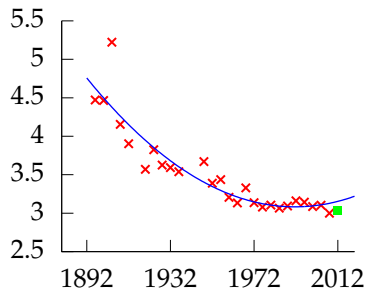
Polynomial order 2, training error -28.403, leave one out error 0.34669.

# Leave One Out Error



Polynomial order 2, training error -28.403, leave one out error 0.34669.

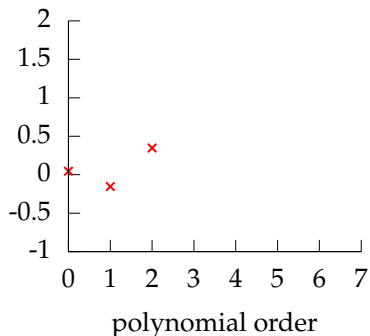
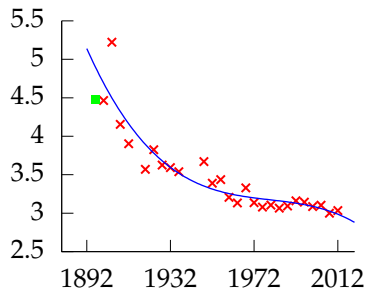
# Leave One Out Error



Polynomial order 2, training error -28.403, leave one out error 0.34669.

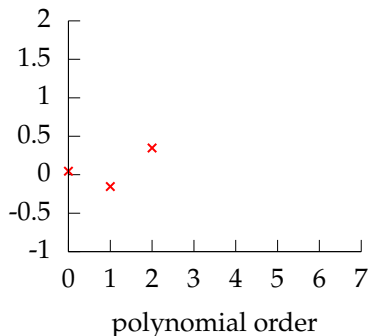
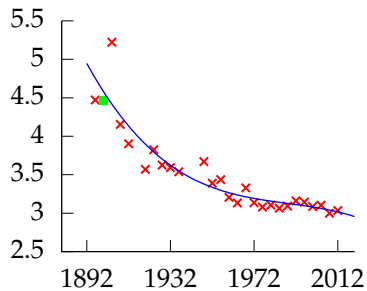


## Leave One Out Error



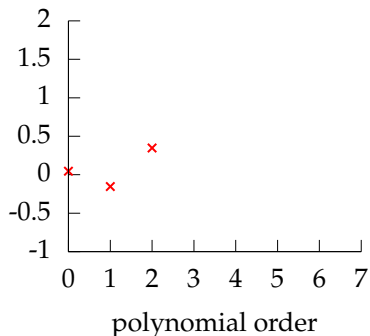
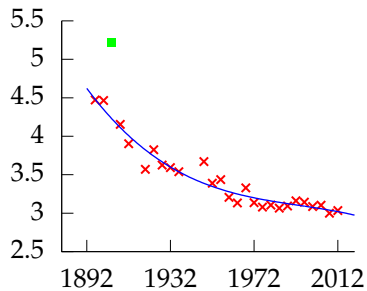
Polynomial order 3, training error -29.223, leave one out error 0.51621.

## Leave One Out Error



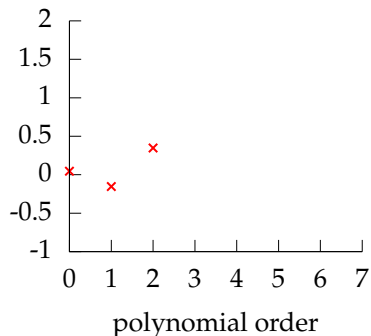
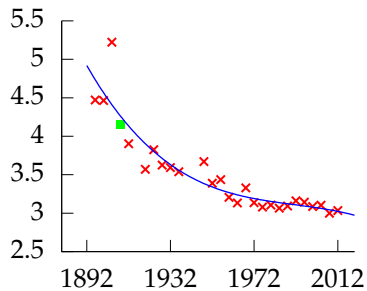
Polynomial order 3, training error -29.223, leave one out error 0.51621.

## Leave One Out Error



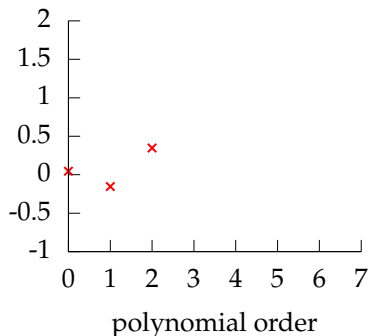
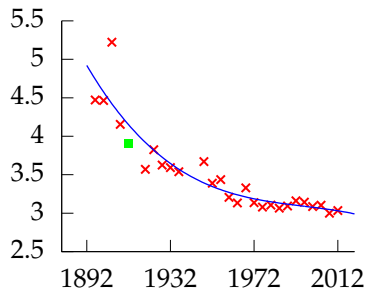
Polynomial order 3, training error -29.223, leave one out error 0.51621.

## Leave One Out Error



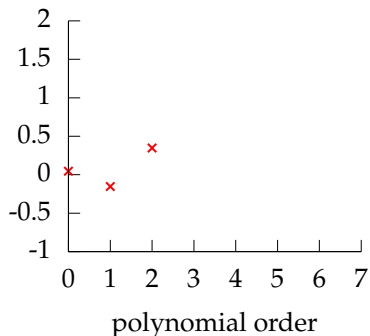
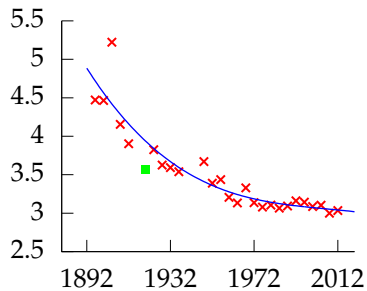
Polynomial order 3, training error -29.223, leave one out error 0.51621.

# Leave One Out Error



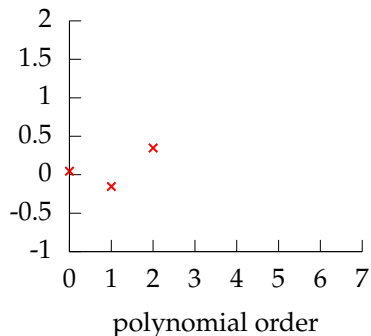
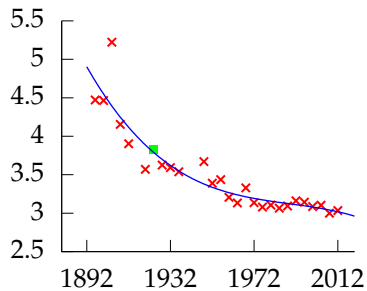
Polynomial order 3, training error -29.223, leave one out error 0.51621.

## Leave One Out Error



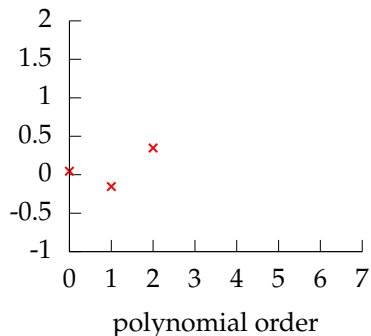
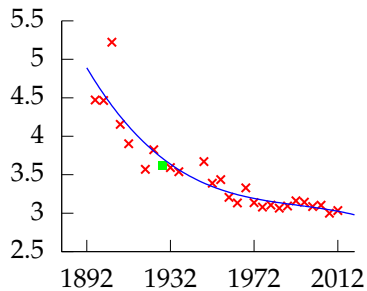
Polynomial order 3, training error -29.223, leave one out error 0.51621.

## Leave One Out Error



Polynomial order 3, training error -29.223, leave one out error 0.51621.

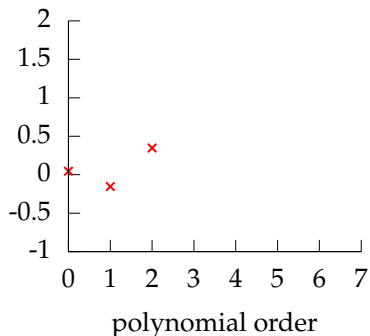
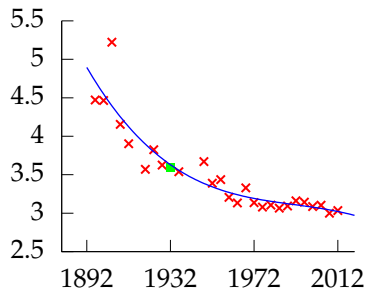
## Leave One Out Error



Polynomial order 3, training error -29.223, leave one out error 0.51621.

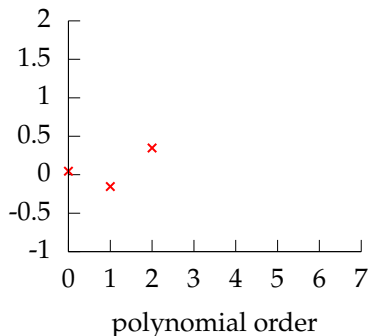
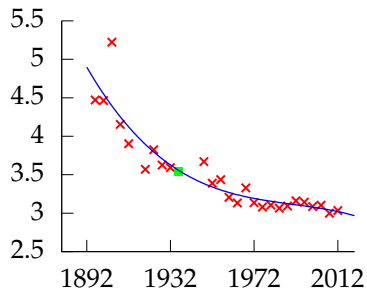


## Leave One Out Error



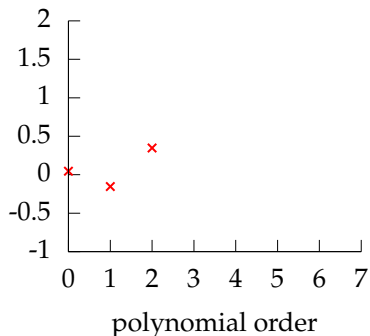
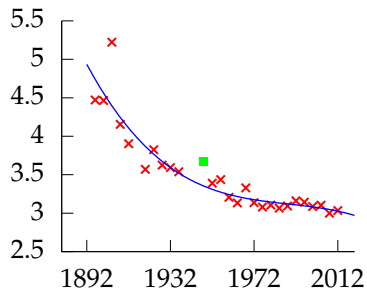
Polynomial order 3, training error -29.223, leave one out error 0.51621.

## Leave One Out Error



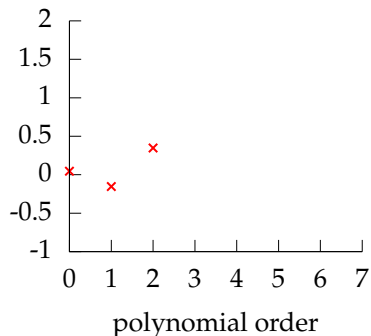
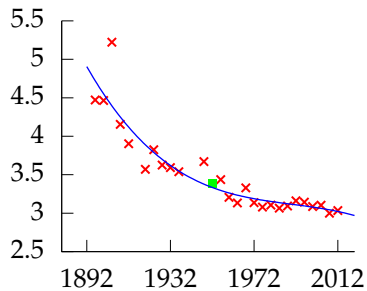
Polynomial order 3, training error -29.223, leave one out error 0.51621.

## Leave One Out Error



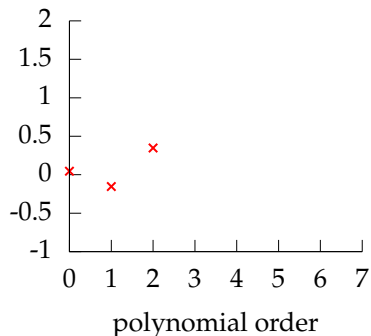
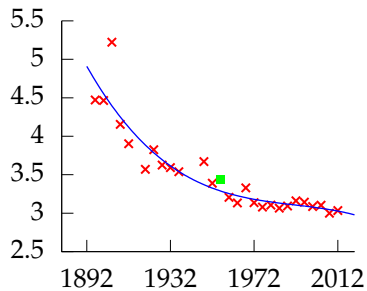
Polynomial order 3, training error -29.223, leave one out error 0.51621.

# Leave One Out Error



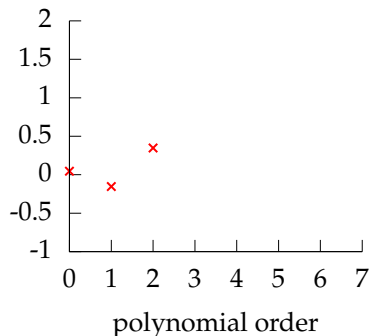
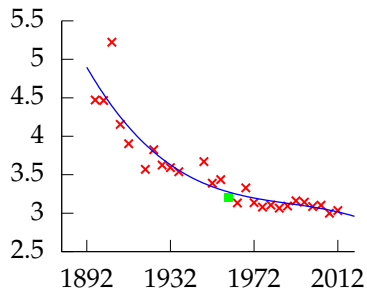
Polynomial order 3, training error -29.223, leave one out error 0.51621.

# Leave One Out Error



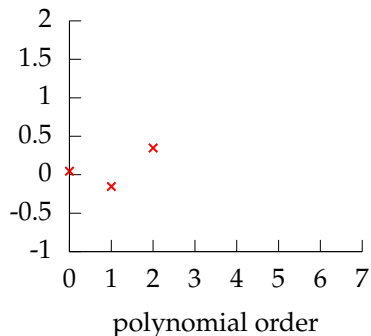
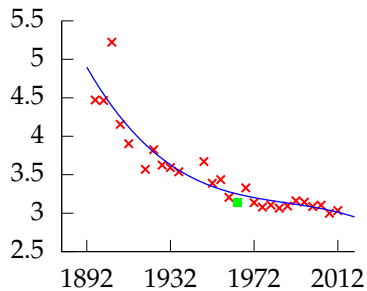
Polynomial order 3, training error -29.223, leave one out error 0.51621.

# Leave One Out Error



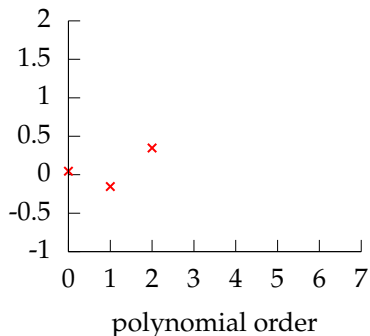
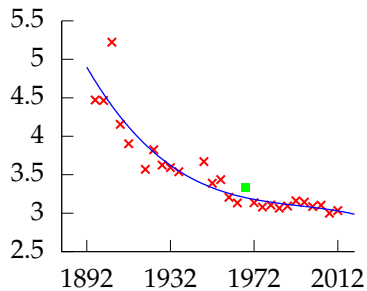
Polynomial order 3, training error -29.223, leave one out error 0.51621.

# Leave One Out Error



Polynomial order 3, training error -29.223, leave one out error 0.51621.

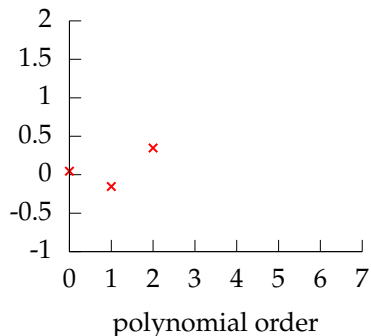
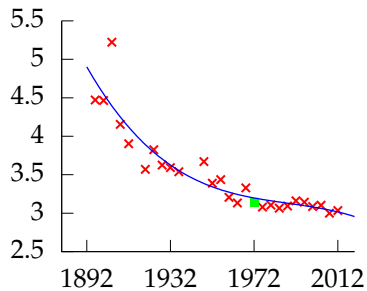
# Leave One Out Error



Polynomial order 3, training error -29.223, leave one out error 0.51621.

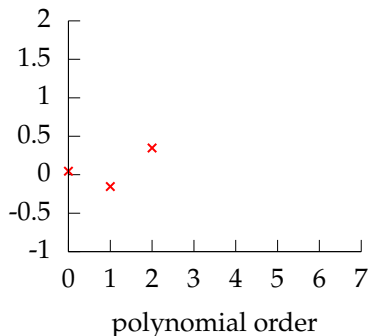
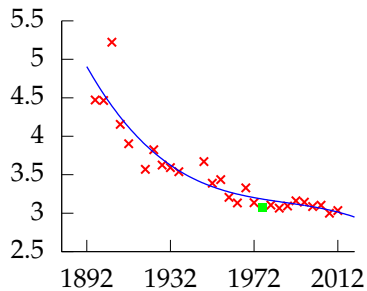


# Leave One Out Error



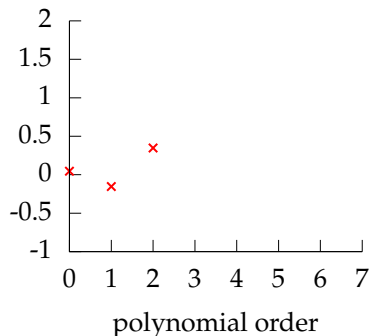
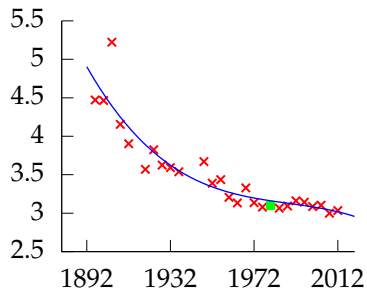
Polynomial order 3, training error -29.223, leave one out error 0.51621.

## Leave One Out Error



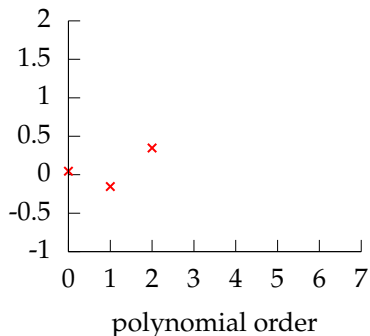
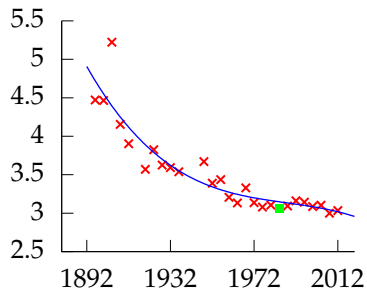
Polynomial order 3, training error -29.223, leave one out error 0.51621.

# Leave One Out Error



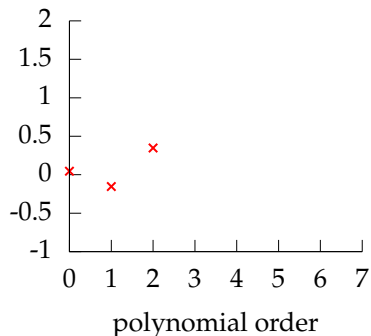
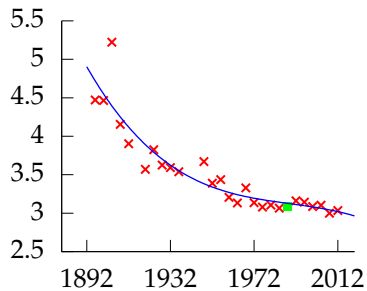
Polynomial order 3, training error -29.223, leave one out error 0.51621.

## Leave One Out Error



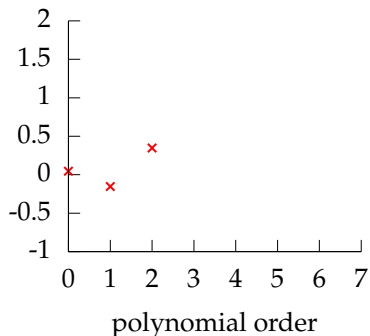
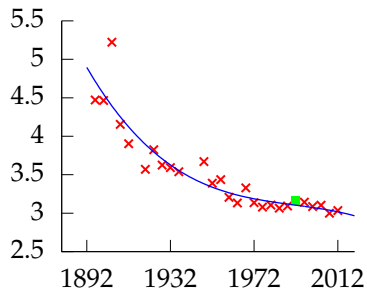
Polynomial order 3, training error -29.223, leave one out error 0.51621.

# Leave One Out Error



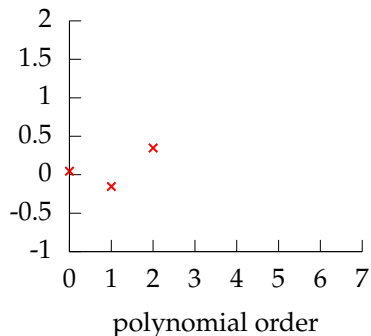
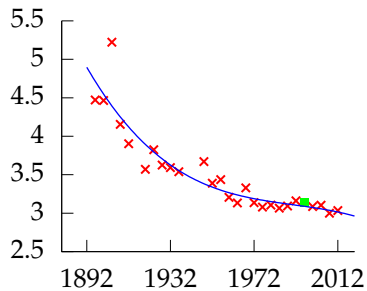
Polynomial order 3, training error -29.223, leave one out error 0.51621.

# Leave One Out Error



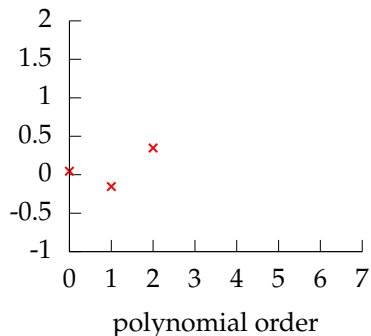
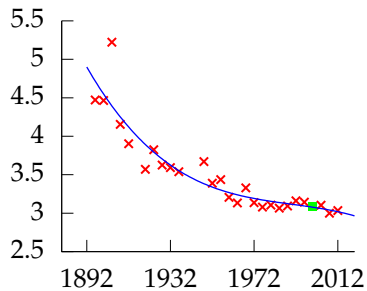
Polynomial order 3, training error -29.223, leave one out error 0.51621.

# Leave One Out Error



Polynomial order 3, training error -29.223, leave one out error 0.51621.

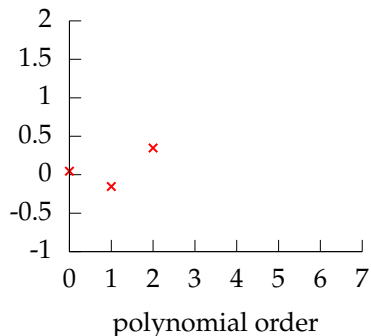
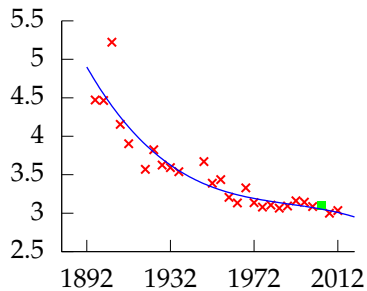
# Leave One Out Error



Polynomial order 3, training error -29.223, leave one out error 0.51621.

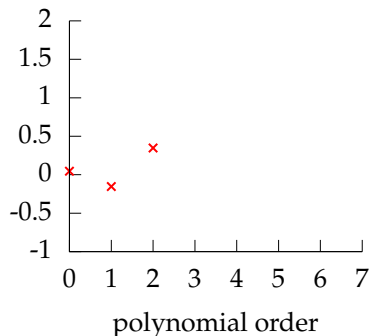
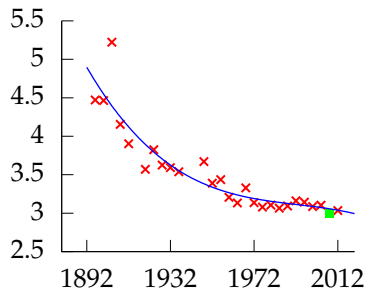


## Leave One Out Error



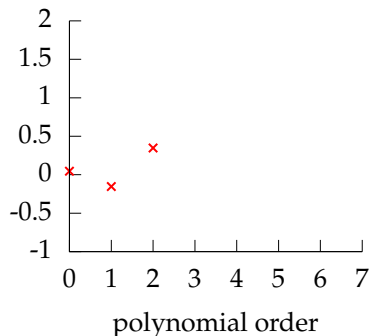
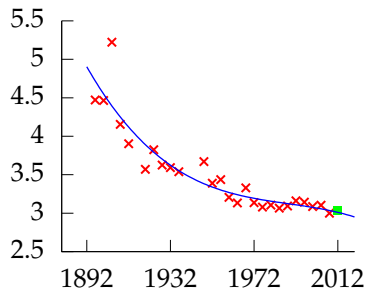
Polynomial order 3, training error -29.223, leave one out error 0.51621.

# Leave One Out Error



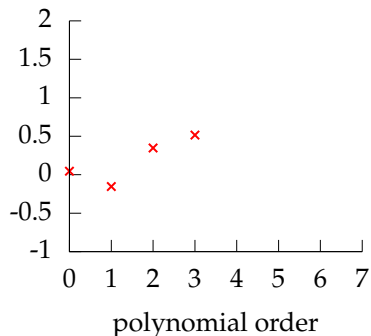
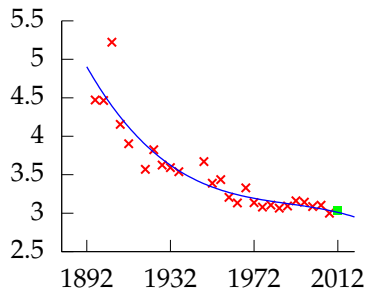
Polynomial order 3, training error -29.223, leave one out error 0.51621.

## Leave One Out Error



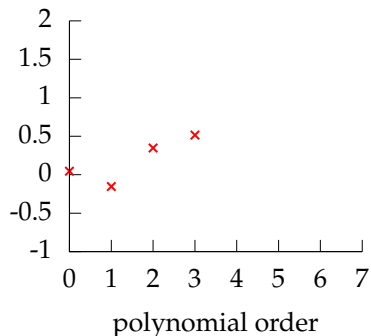
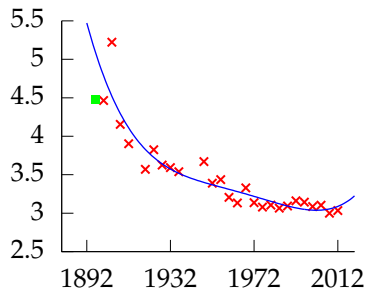
Polynomial order 3, training error -29.223, leave one out error 0.51621.

## Leave One Out Error



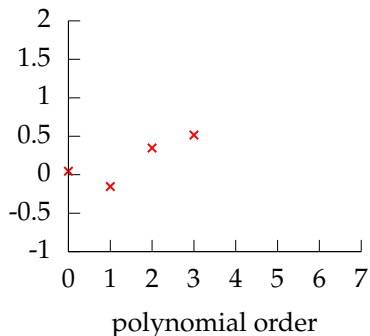
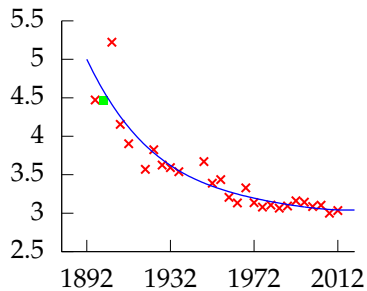
Polynomial order 3, training error -29.223, leave one out error 0.51621.

# Leave One Out Error



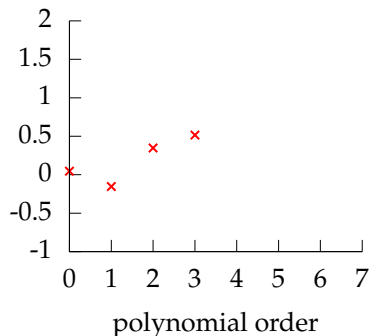
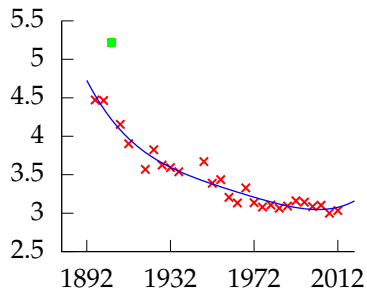
Polynomial order 4, training error -29.324, leave one out error 0.84844.

## Leave One Out Error



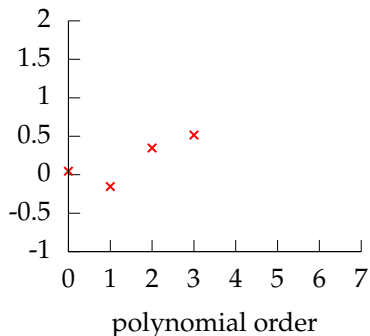
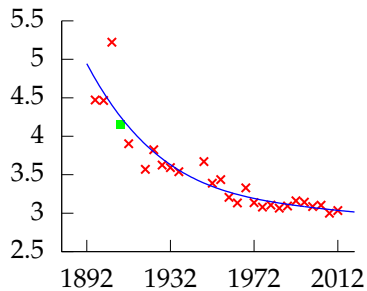
Polynomial order 4, training error -29.324, leave one out error 0.84844.

# Leave One Out Error



Polynomial order 4, training error -29.324, leave one out error 0.84844.

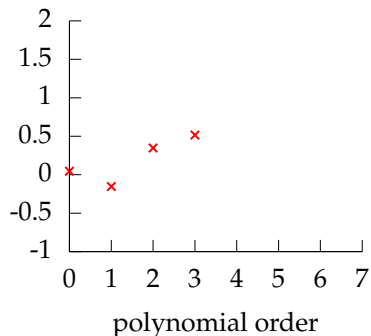
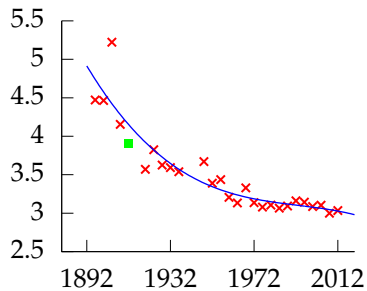
# Leave One Out Error



Polynomial order 4, training error -29.324, leave one out error 0.84844.

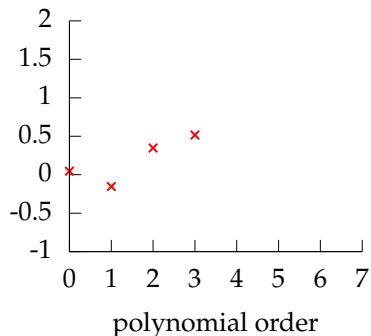
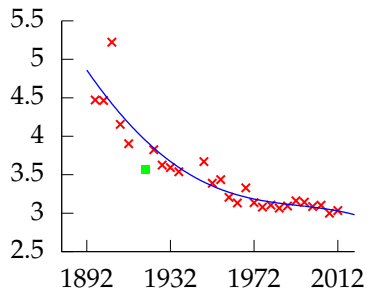


# Leave One Out Error



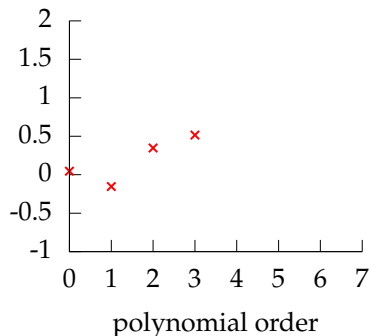
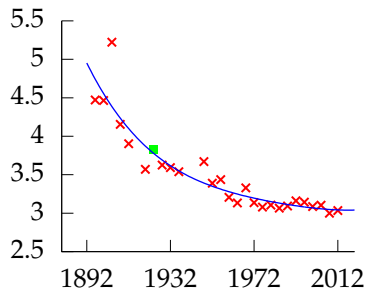
Polynomial order 4, training error -29.324, leave one out error 0.84844.

# Leave One Out Error



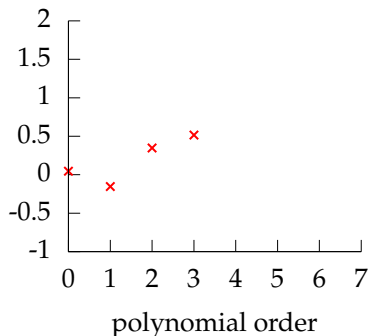
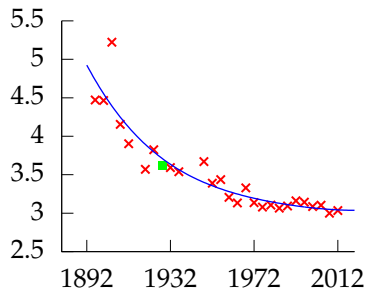
Polynomial order 4, training error -29.324, leave one out error 0.84844.

## Leave One Out Error



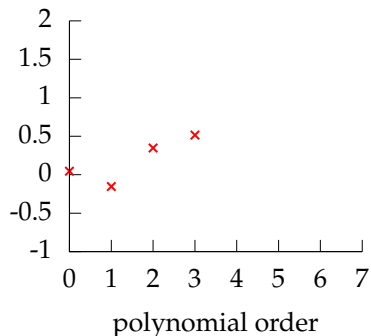
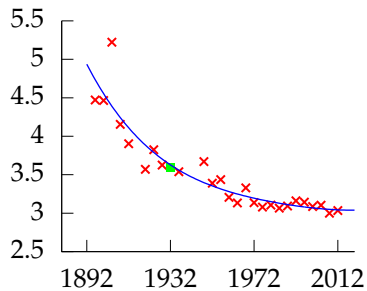
Polynomial order 4, training error -29.324, leave one out error 0.84844.

## Leave One Out Error



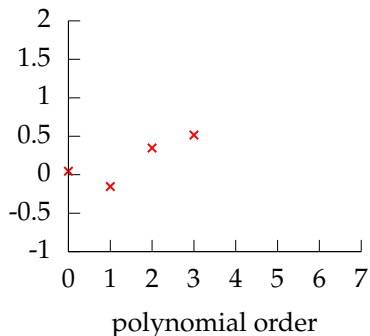
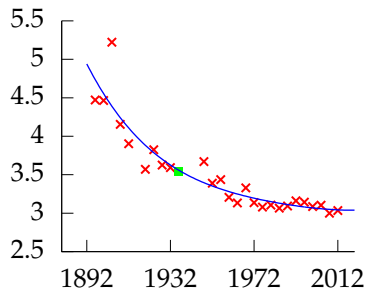
Polynomial order 4, training error -29.324, leave one out error 0.84844.

# Leave One Out Error



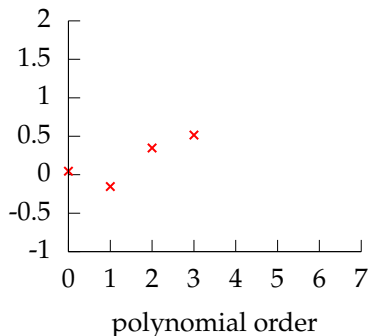
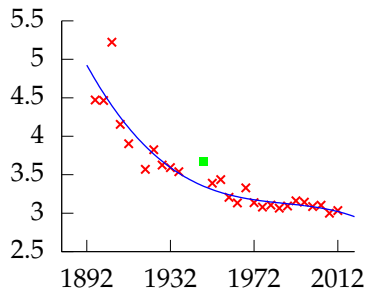
Polynomial order 4, training error -29.324, leave one out error 0.84844.

## Leave One Out Error



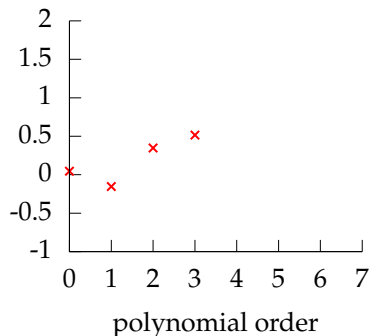
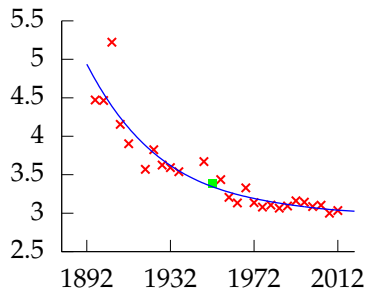
Polynomial order 4, training error -29.324, leave one out error 0.84844.

# Leave One Out Error



Polynomial order 4, training error -29.324, leave one out error 0.84844.

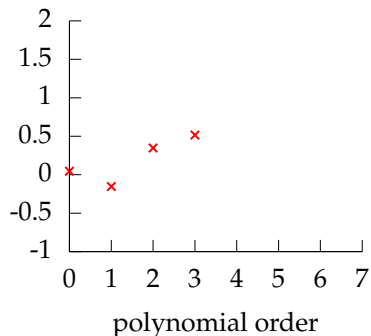
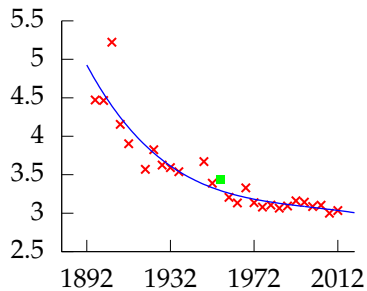
# Leave One Out Error



Polynomial order 4, training error -29.324, leave one out error 0.84844.

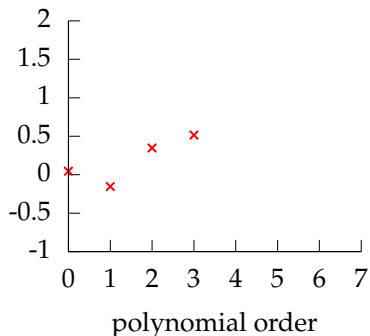
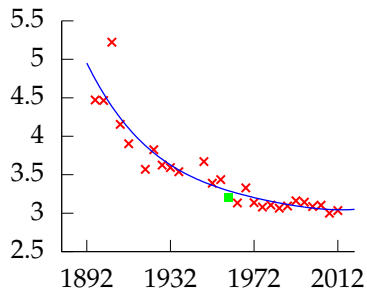


# Leave One Out Error



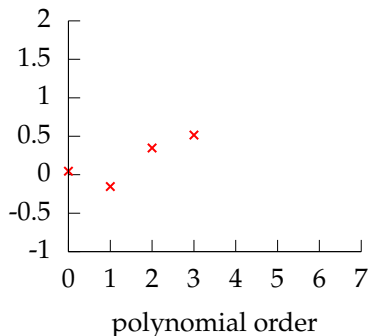
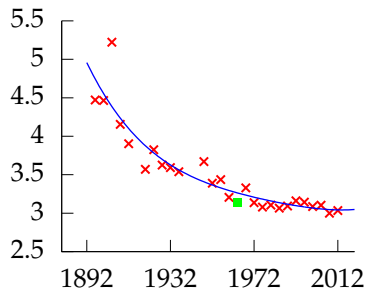
Polynomial order 4, training error -29.324, leave one out error 0.84844.

# Leave One Out Error



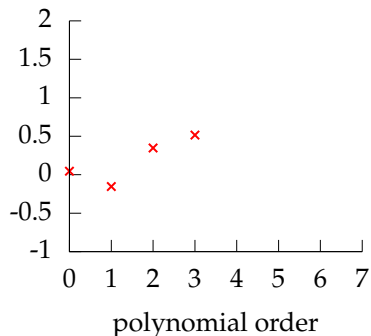
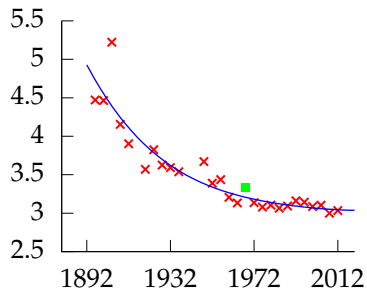
Polynomial order 4, training error -29.324, leave one out error 0.84844.

# Leave One Out Error



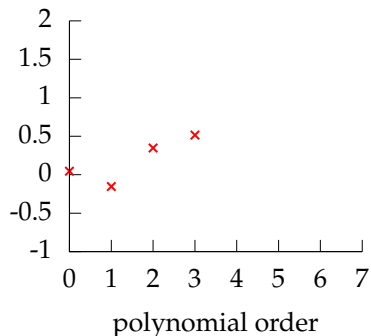
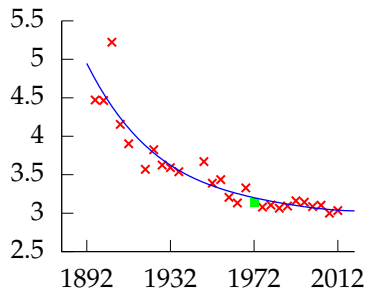
Polynomial order 4, training error -29.324, leave one out error 0.84844.

# Leave One Out Error



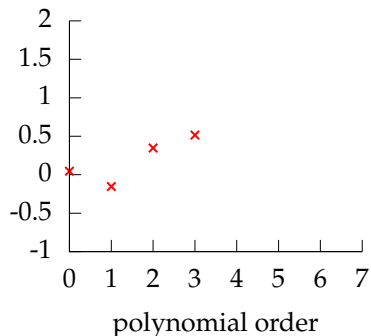
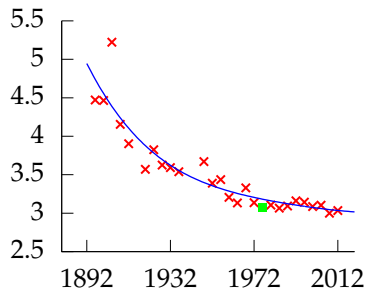
Polynomial order 4, training error -29.324, leave one out error 0.84844.

# Leave One Out Error



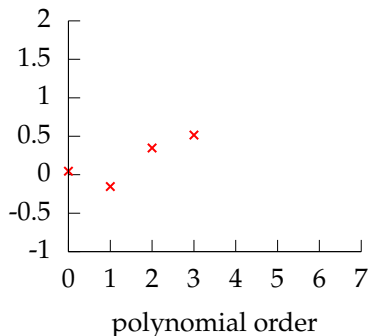
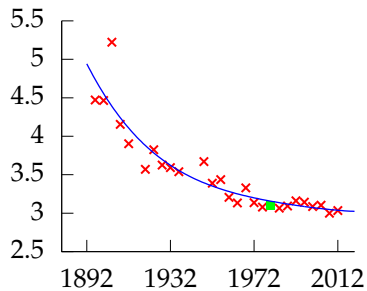
Polynomial order 4, training error -29.324, leave one out error 0.84844.

# Leave One Out Error



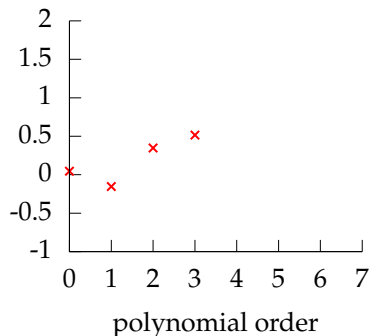
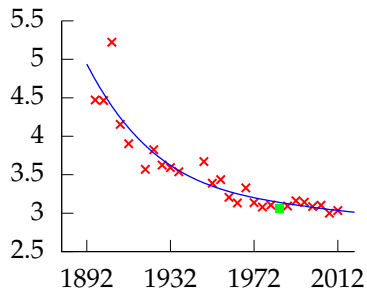
Polynomial order 4, training error -29.324, leave one out error 0.84844.

## Leave One Out Error



Polynomial order 4, training error -29.324, leave one out error 0.84844.

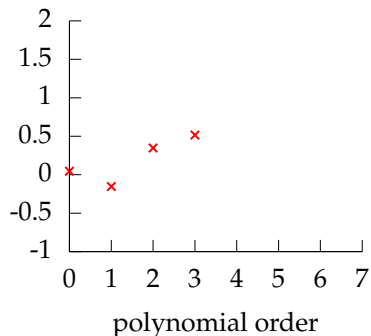
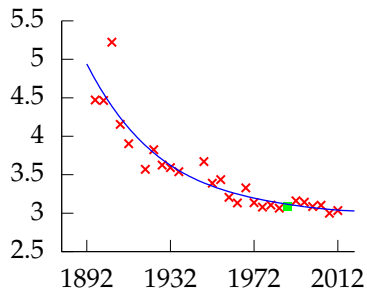
# Leave One Out Error



Polynomial order 4, training error -29.324, leave one out error 0.84844.

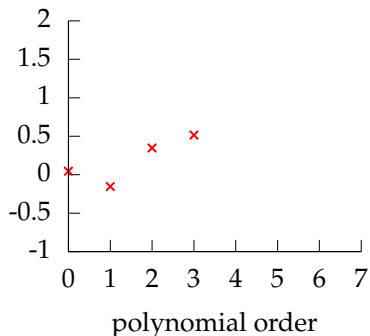
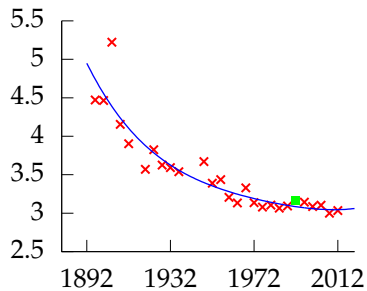


## Leave One Out Error



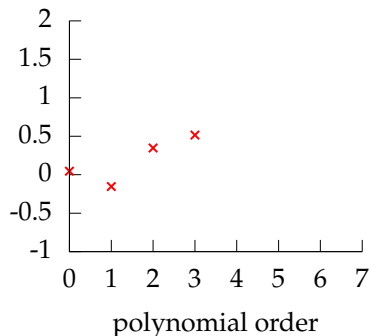
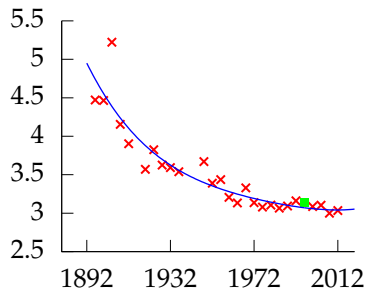
Polynomial order 4, training error -29.324, leave one out error 0.84844.

## Leave One Out Error



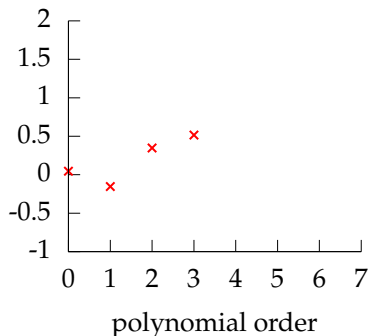
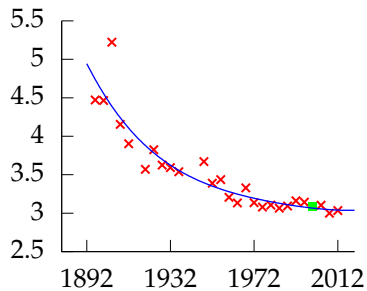
Polynomial order 4, training error -29.324, leave one out error 0.84844.

## Leave One Out Error



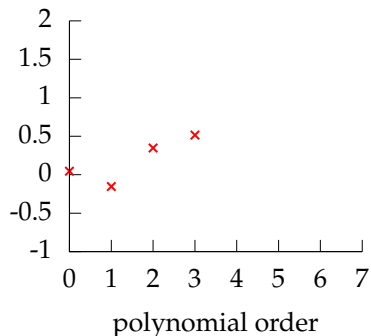
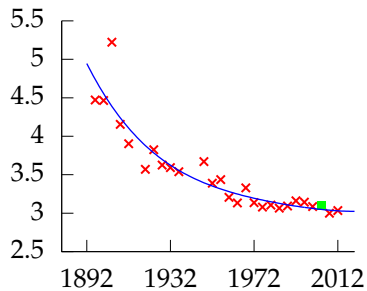
Polynomial order 4, training error -29.324, leave one out error 0.84844.

# Leave One Out Error



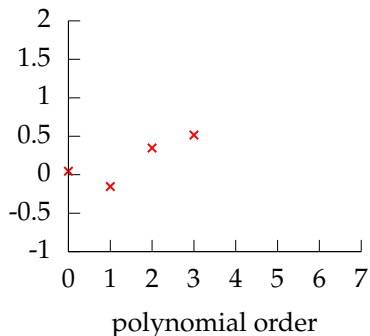
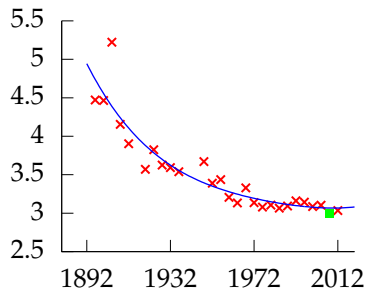
Polynomial order 4, training error -29.324, leave one out error 0.84844.

# Leave One Out Error



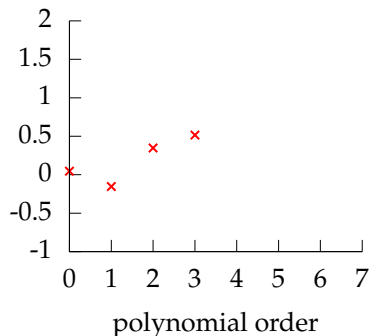
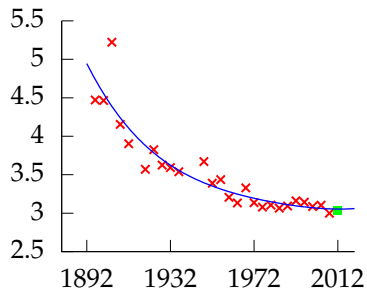
Polynomial order 4, training error -29.324, leave one out error 0.84844.

# Leave One Out Error



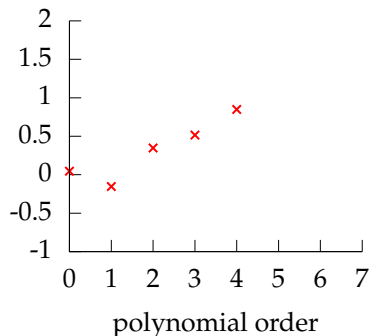
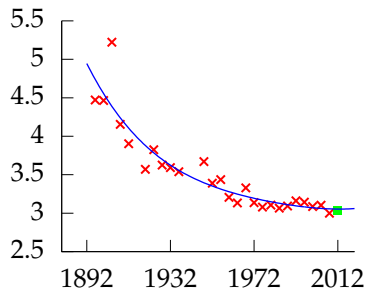
Polynomial order 4, training error -29.324, leave one out error 0.84844.

# Leave One Out Error



Polynomial order 4, training error -29.324, leave one out error 0.84844.

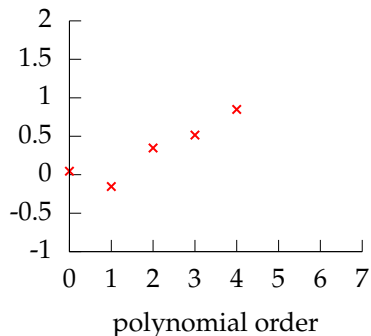
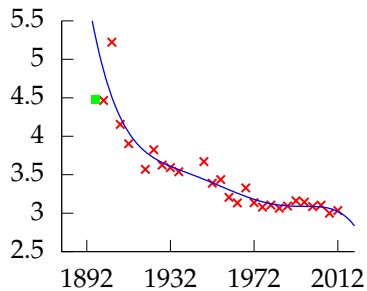
## Leave One Out Error



Polynomial order 4, training error -29.324, leave one out error 0.84844.

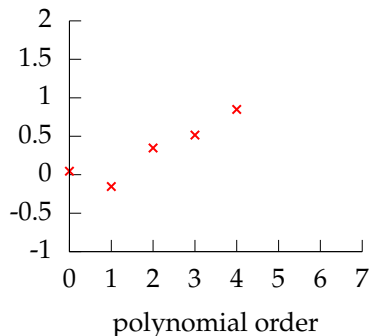
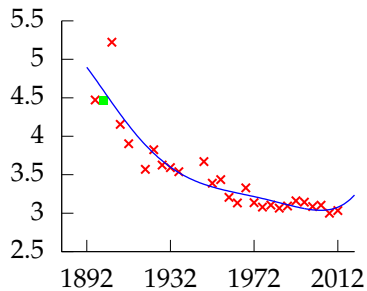


## Leave One Out Error



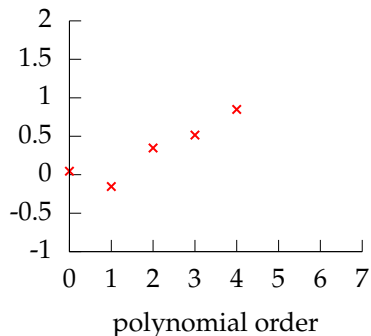
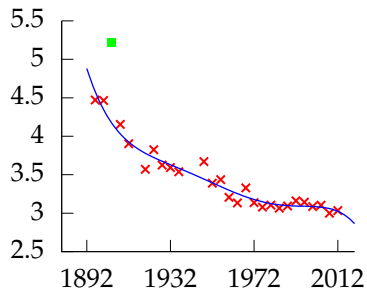
Polynomial order 5, training error -29.524, leave one out error 1.48.

## Leave One Out Error



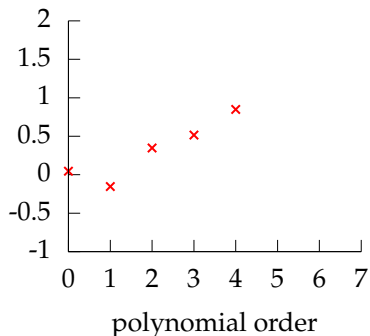
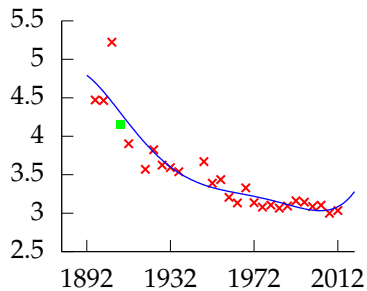
Polynomial order 5, training error -29.524, leave one out error 1.48.

## Leave One Out Error



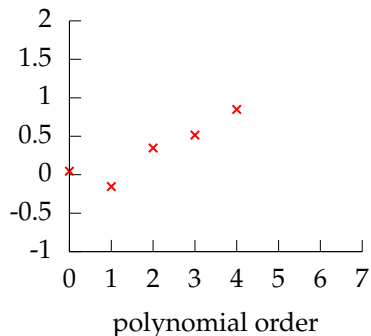
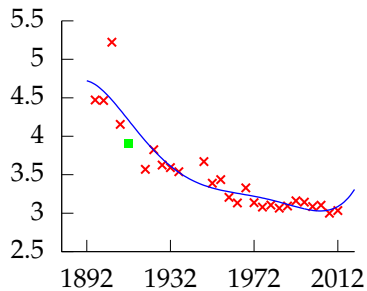
Polynomial order 5, training error -29.524, leave one out error 1.48.

## Leave One Out Error



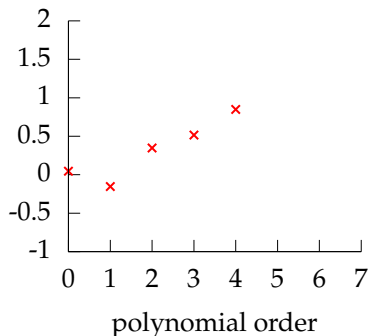
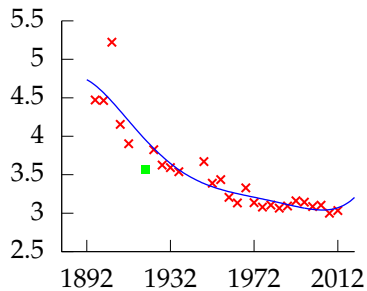
Polynomial order 5, training error -29.524, leave one out error 1.48.

# Leave One Out Error



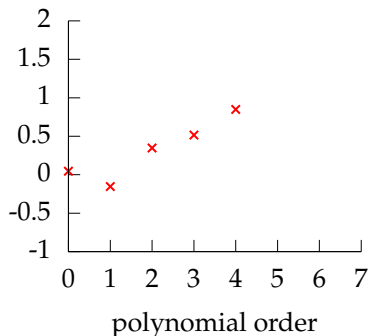
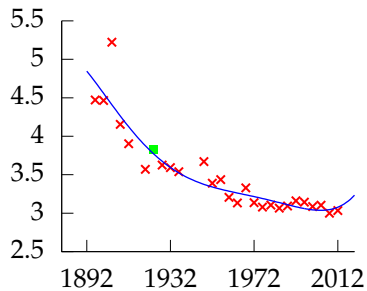
Polynomial order 5, training error -29.524, leave one out error 1.48.

## Leave One Out Error



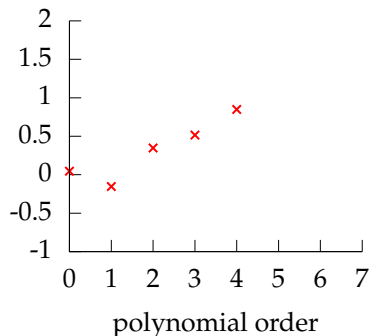
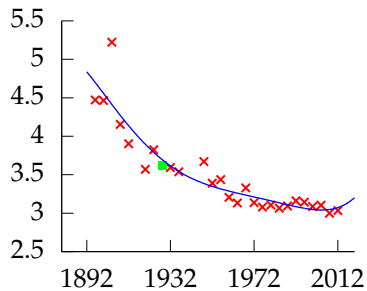
Polynomial order 5, training error -29.524, leave one out error 1.48.

## Leave One Out Error



Polynomial order 5, training error -29.524, leave one out error 1.48.

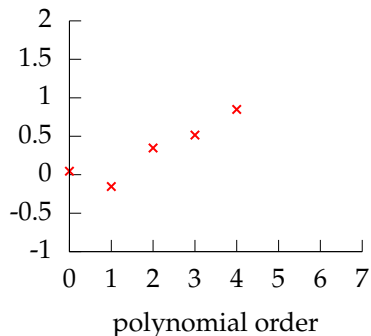
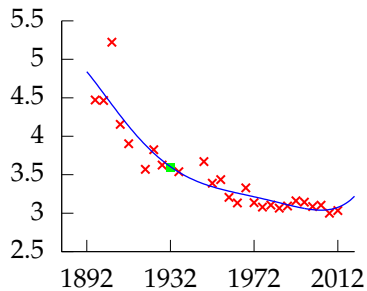
# Leave One Out Error



Polynomial order 5, training error -29.524, leave one out error 1.48.

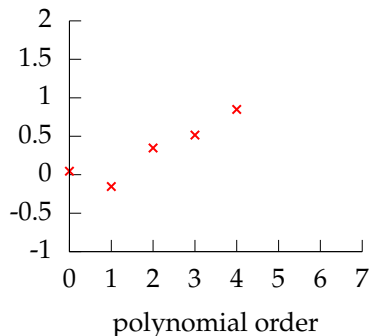
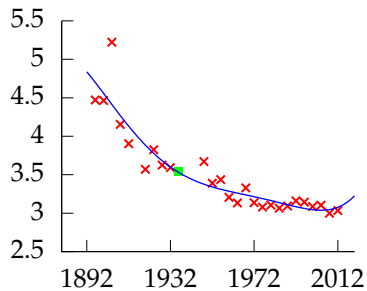


# Leave One Out Error



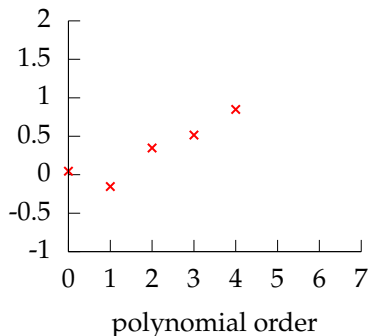
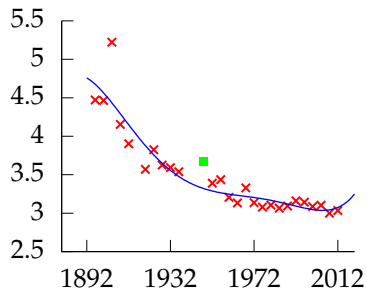
Polynomial order 5, training error -29.524, leave one out error 1.48.

## Leave One Out Error



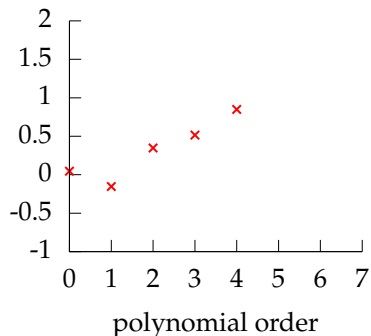
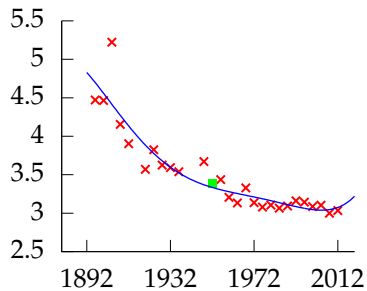
Polynomial order 5, training error -29.524, leave one out error 1.48.

## Leave One Out Error



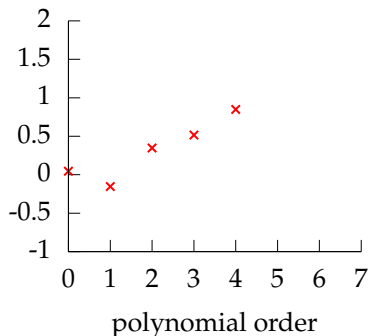
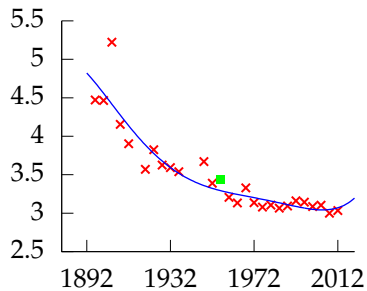
Polynomial order 5, training error -29.524, leave one out error 1.48.

## Leave One Out Error



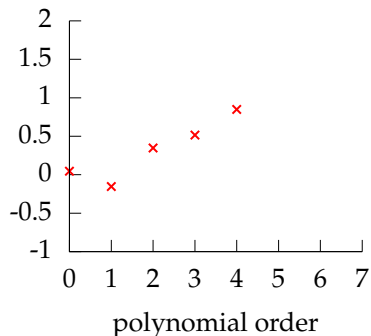
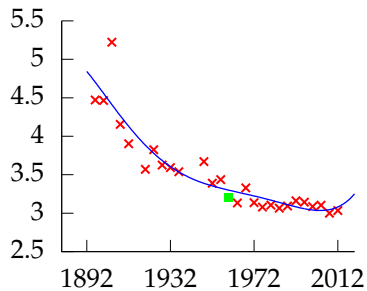
Polynomial order 5, training error -29.524, leave one out error 1.48.

## Leave One Out Error



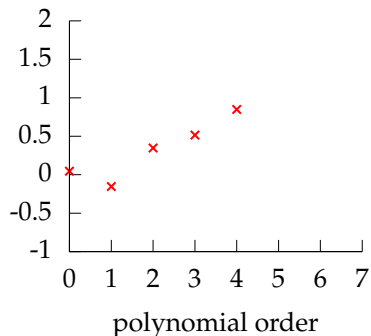
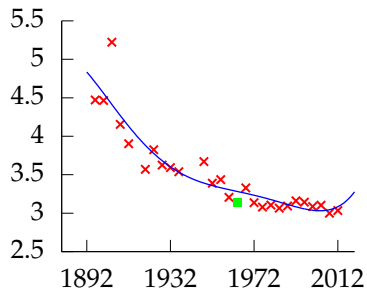
Polynomial order 5, training error -29.524, leave one out error 1.48.

# Leave One Out Error



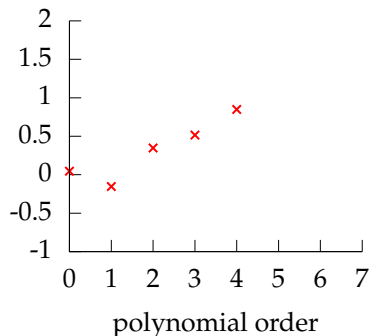
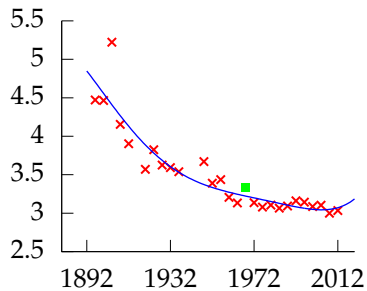
Polynomial order 5, training error -29.524, leave one out error 1.48.

# Leave One Out Error



Polynomial order 5, training error -29.524, leave one out error 1.48.

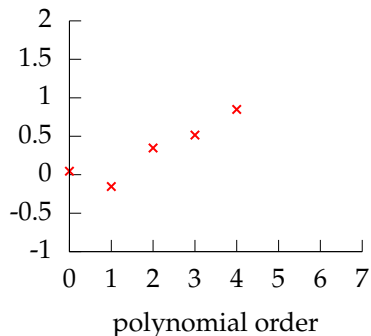
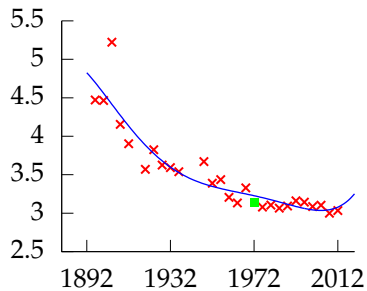
## Leave One Out Error



Polynomial order 5, training error -29.524, leave one out error 1.48.

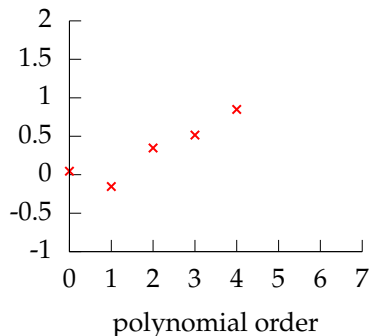
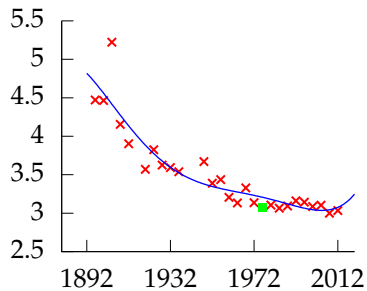


## Leave One Out Error



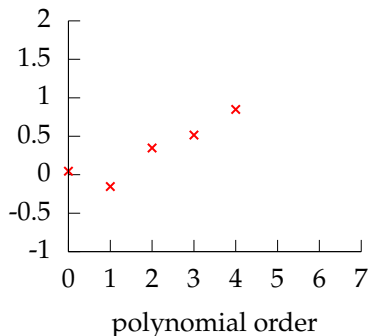
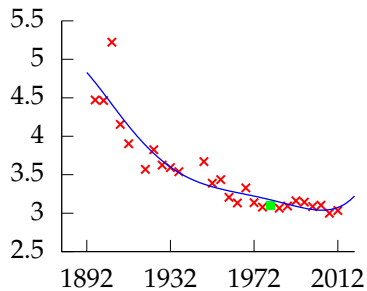
Polynomial order 5, training error -29.524, leave one out error 1.48.

## Leave One Out Error



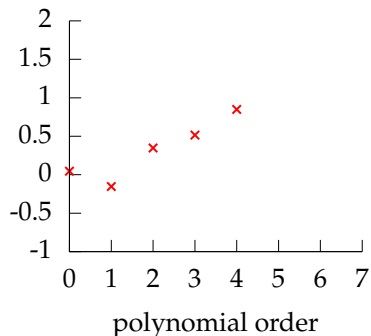
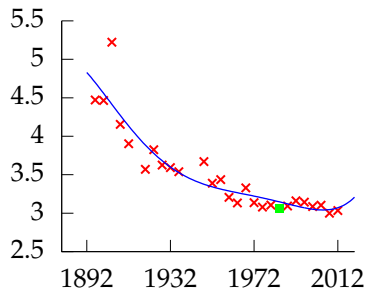
Polynomial order 5, training error -29.524, leave one out error 1.48.

## Leave One Out Error



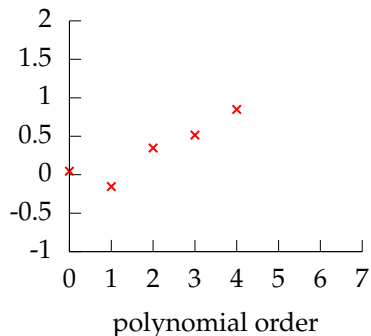
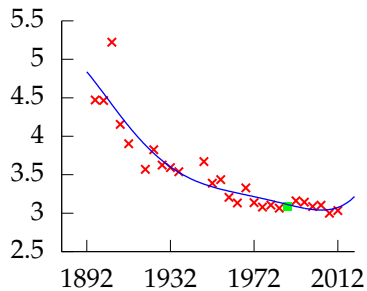
Polynomial order 5, training error -29.524, leave one out error 1.48.

## Leave One Out Error



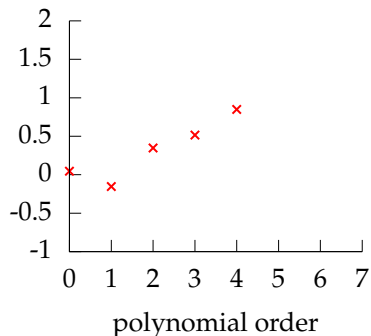
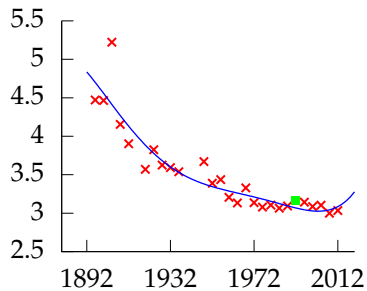
Polynomial order 5, training error -29.524, leave one out error 1.48.

## Leave One Out Error



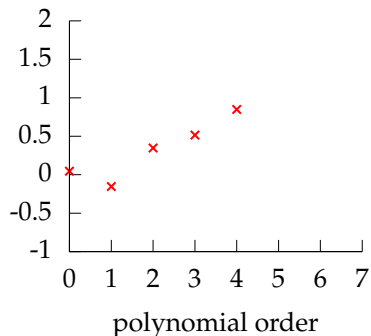
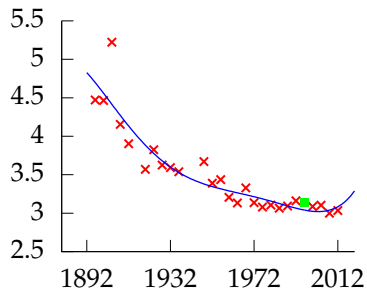
Polynomial order 5, training error -29.524, leave one out error 1.48.

## Leave One Out Error



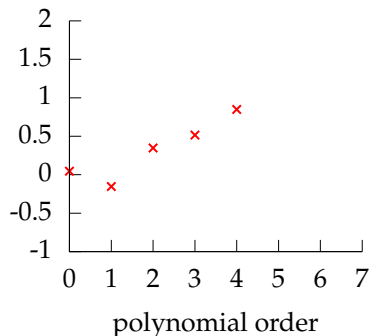
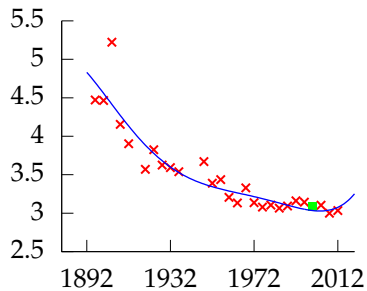
Polynomial order 5, training error -29.524, leave one out error 1.48.

## Leave One Out Error



Polynomial order 5, training error -29.524, leave one out error 1.48.

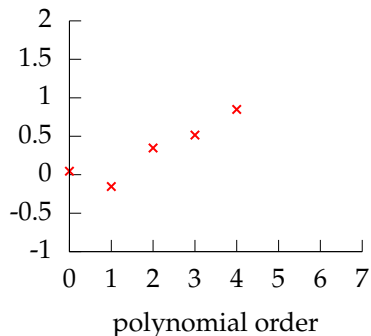
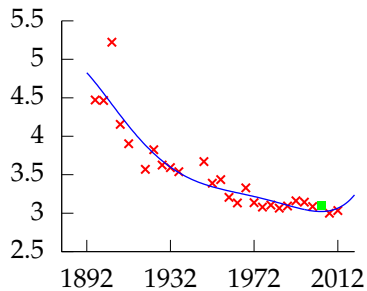
## Leave One Out Error



Polynomial order 5, training error -29.524, leave one out error 1.48.

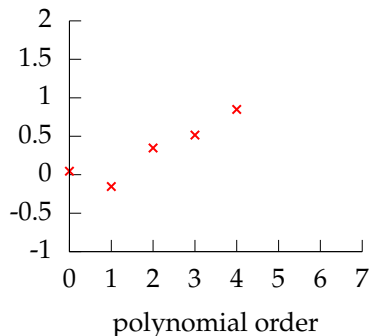
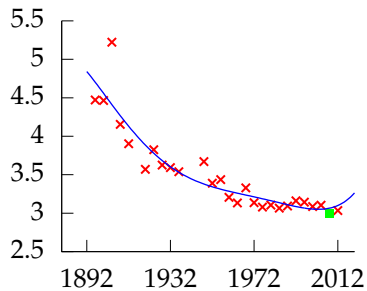


## Leave One Out Error



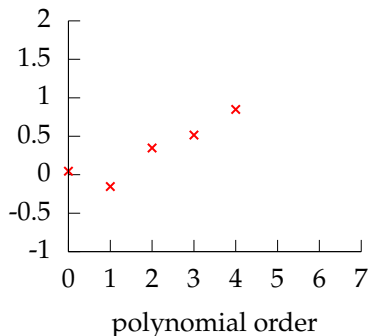
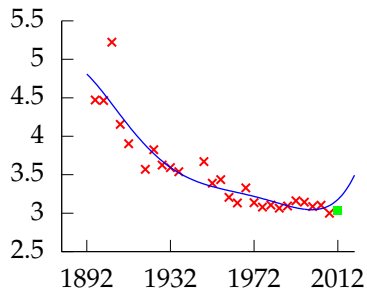
Polynomial order 5, training error -29.524, leave one out error 1.48.

# Leave One Out Error



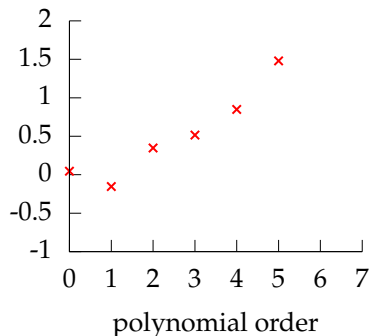
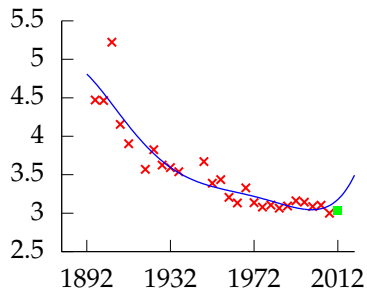
Polynomial order 5, training error -29.524, leave one out error 1.48.

## Leave One Out Error



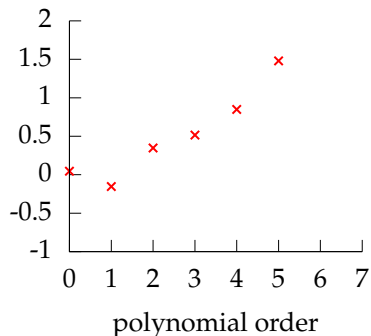
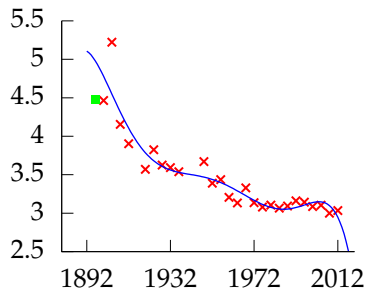
Polynomial order 5, training error -29.524, leave one out error 1.48.

## Leave One Out Error



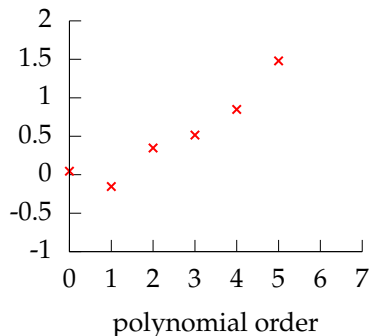
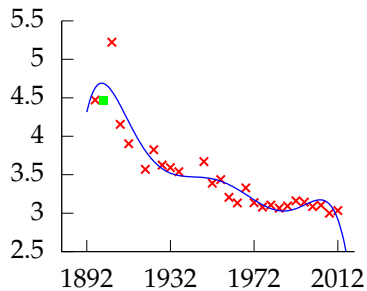
Polynomial order 5, training error -29.524, leave one out error 1.48.

# Leave One Out Error



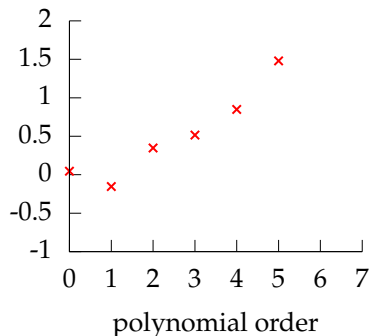
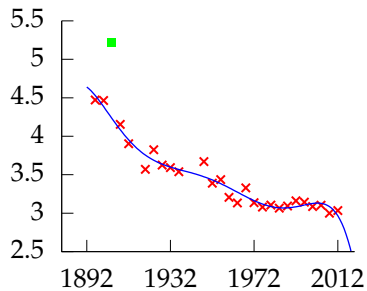
Polynomial order 6, training error -32.237, leave one out error 1.5047.

# Leave One Out Error



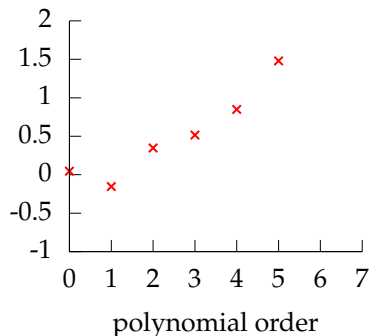
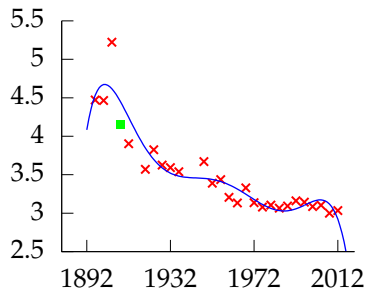
Polynomial order 6, training error -32.237, leave one out error 1.5047.

## Leave One Out Error



Polynomial order 6, training error -32.237, leave one out error 1.5047.

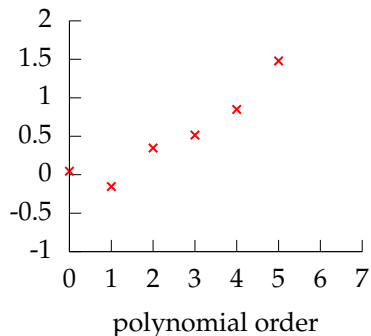
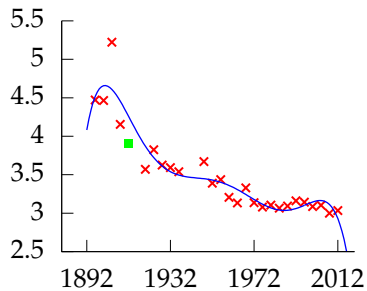
# Leave One Out Error



Polynomial order 6, training error -32.237, leave one out error 1.5047.

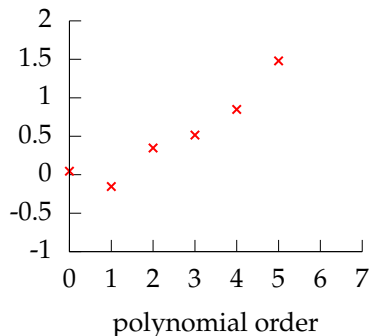
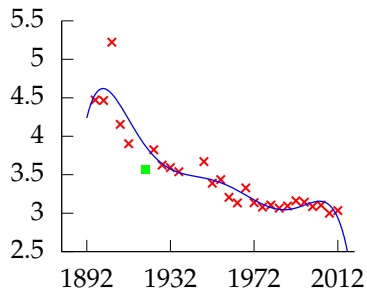


# Leave One Out Error



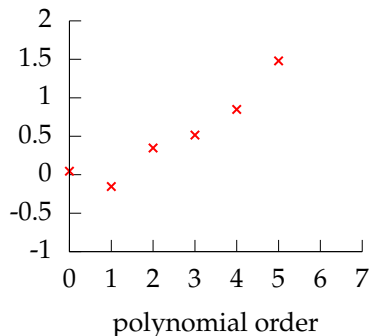
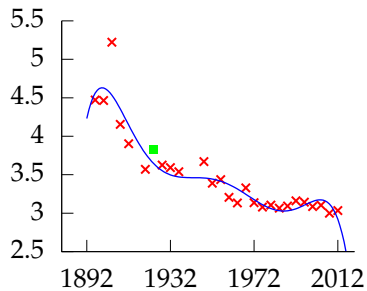
Polynomial order 6, training error -32.237, leave one out error 1.5047.

# Leave One Out Error



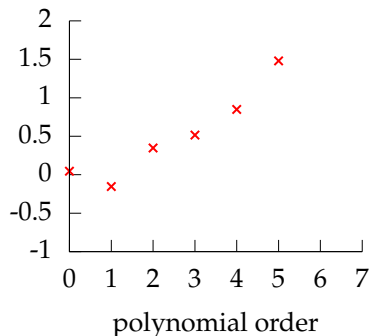
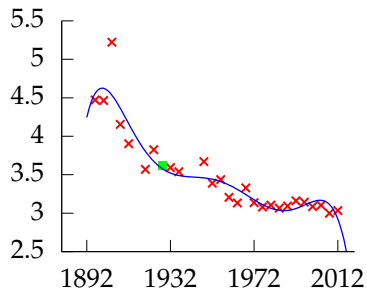
Polynomial order 6, training error -32.237, leave one out error 1.5047.

## Leave One Out Error



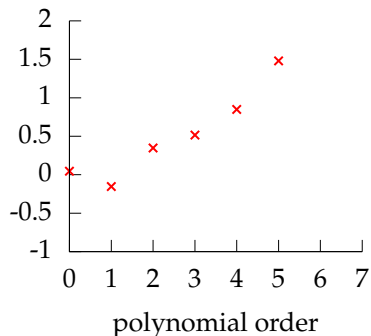
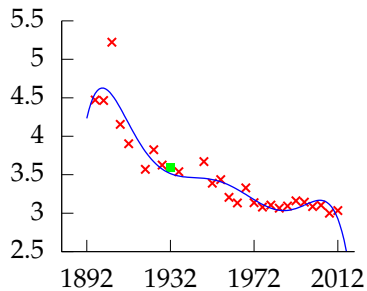
Polynomial order 6, training error -32.237, leave one out error 1.5047.

# Leave One Out Error



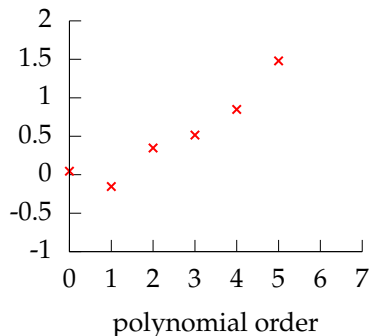
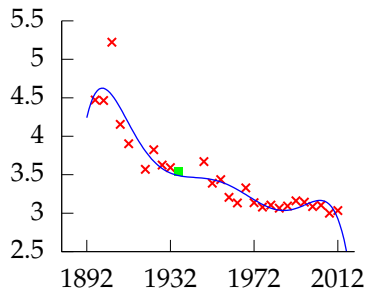
Polynomial order 6, training error -32.237, leave one out error 1.5047.

# Leave One Out Error



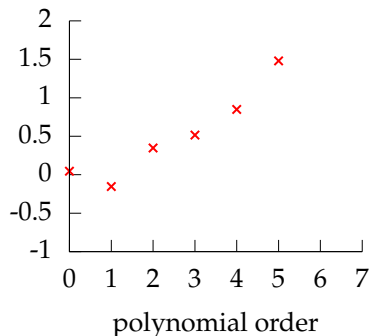
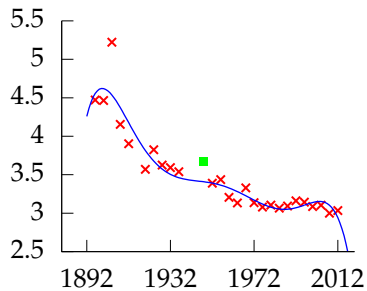
Polynomial order 6, training error -32.237, leave one out error 1.5047.

# Leave One Out Error



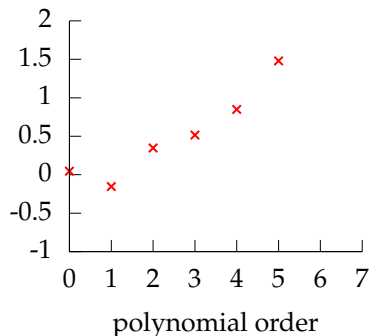
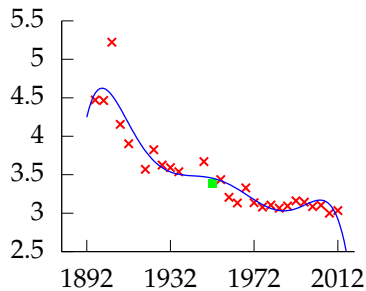
Polynomial order 6, training error -32.237, leave one out error 1.5047.

# Leave One Out Error



Polynomial order 6, training error -32.237, leave one out error 1.5047.

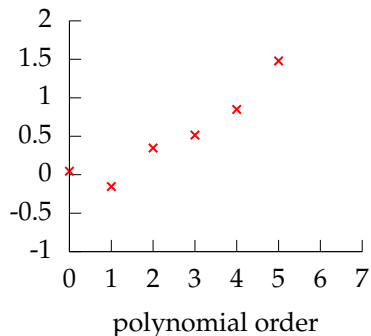
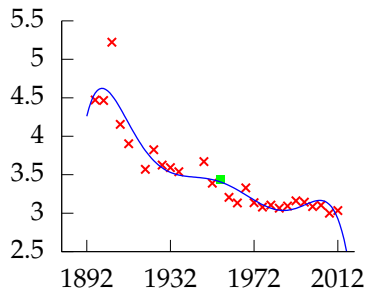
# Leave One Out Error



Polynomial order 6, training error -32.237, leave one out error 1.5047.

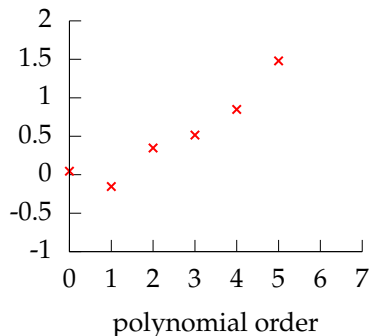
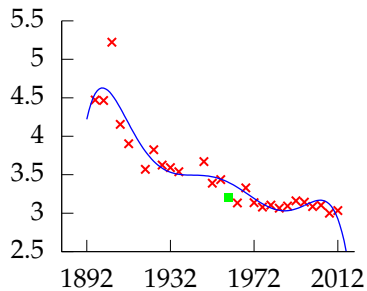


# Leave One Out Error



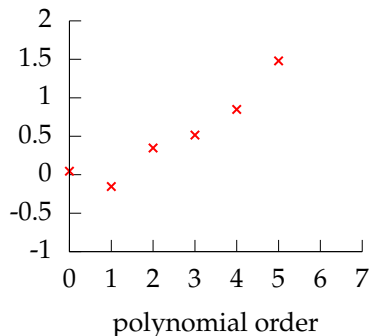
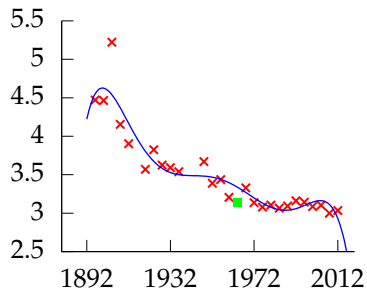
Polynomial order 6, training error -32.237, leave one out error 1.5047.

# Leave One Out Error



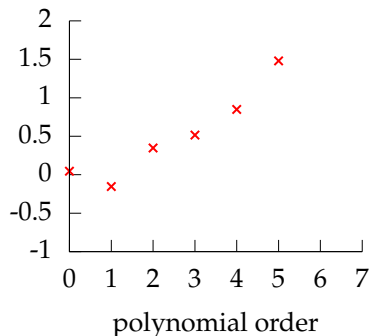
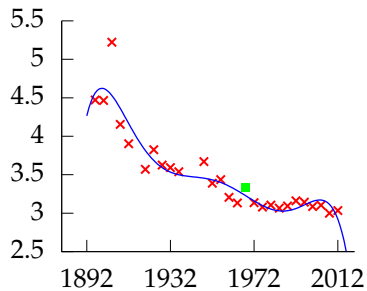
Polynomial order 6, training error -32.237, leave one out error 1.5047.

# Leave One Out Error



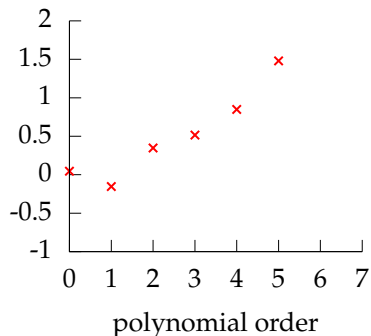
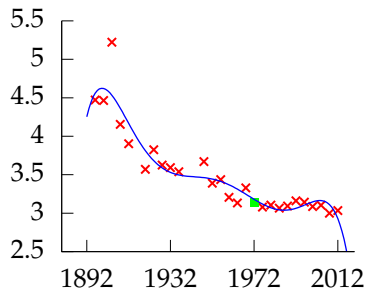
Polynomial order 6, training error -32.237, leave one out error 1.5047.

# Leave One Out Error



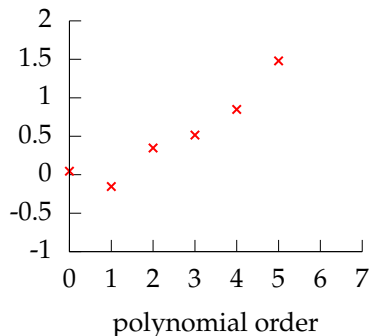
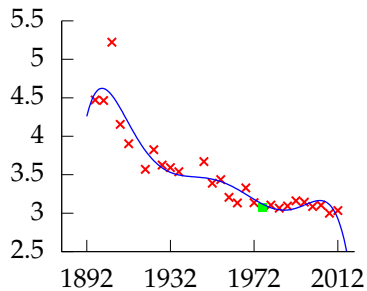
Polynomial order 6, training error -32.237, leave one out error 1.5047.

# Leave One Out Error



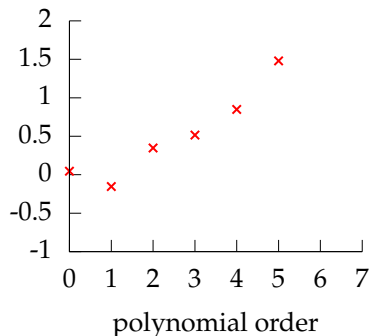
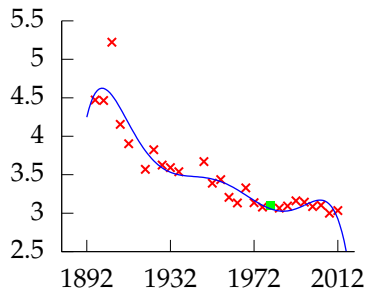
Polynomial order 6, training error -32.237, leave one out error 1.5047.

## Leave One Out Error



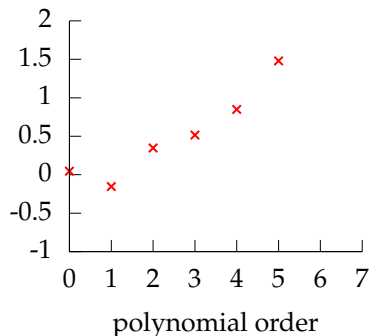
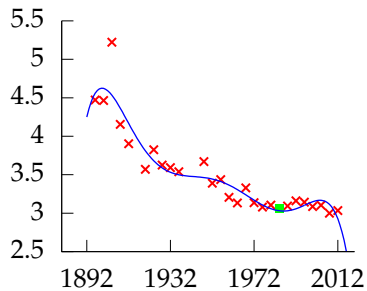
Polynomial order 6, training error -32.237, leave one out error 1.5047.

# Leave One Out Error



Polynomial order 6, training error -32.237, leave one out error 1.5047.

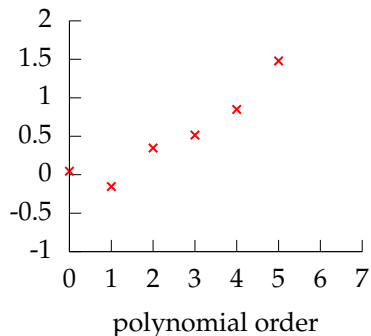
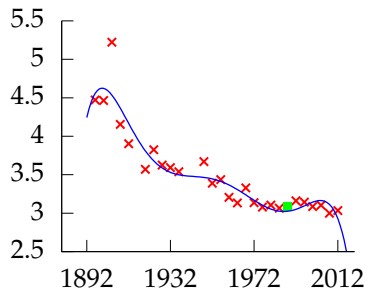
# Leave One Out Error



Polynomial order 6, training error -32.237, leave one out error 1.5047.

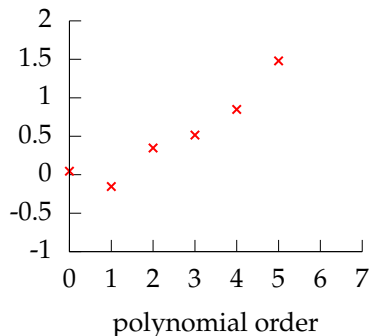
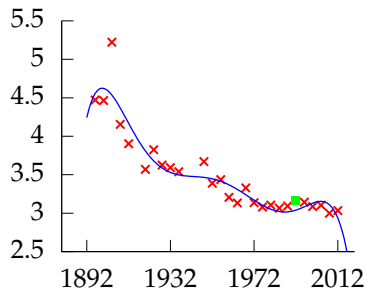


## Leave One Out Error



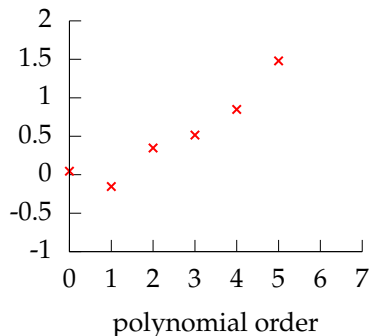
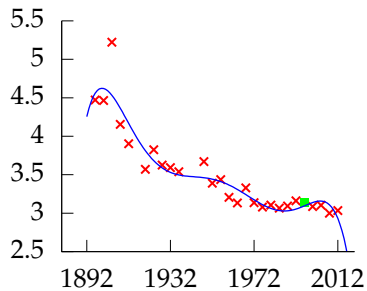
Polynomial order 6, training error -32.237, leave one out error 1.5047.

# Leave One Out Error



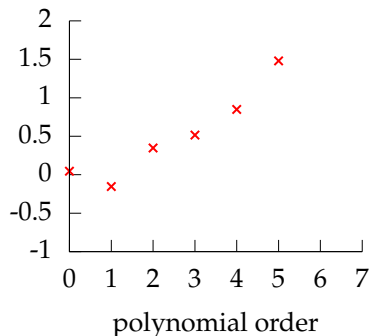
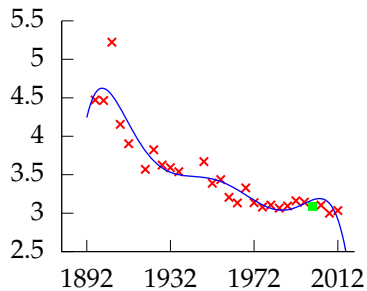
Polynomial order 6, training error -32.237, leave one out error 1.5047.

# Leave One Out Error



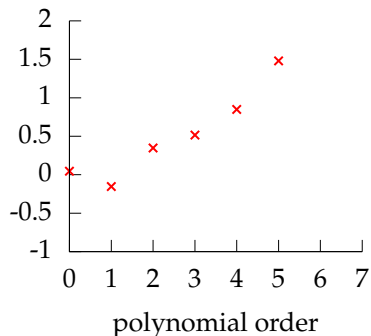
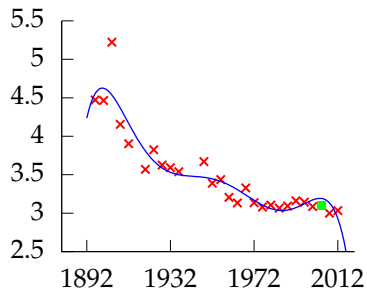
Polynomial order 6, training error -32.237, leave one out error 1.5047.

# Leave One Out Error



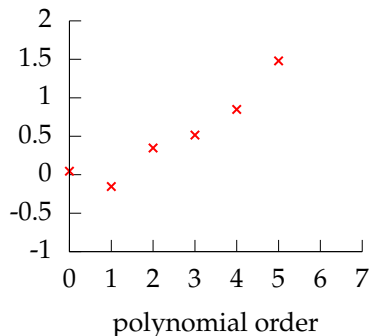
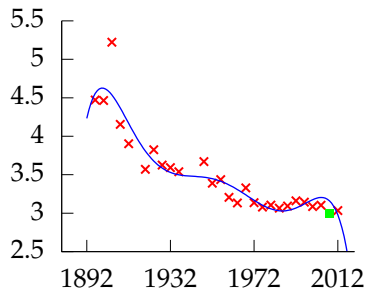
Polynomial order 6, training error -32.237, leave one out error 1.5047.

# Leave One Out Error



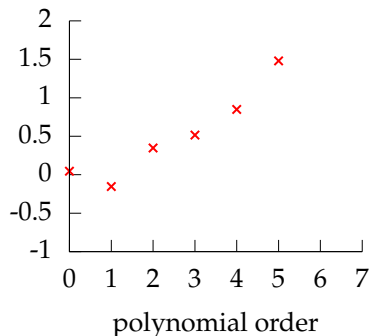
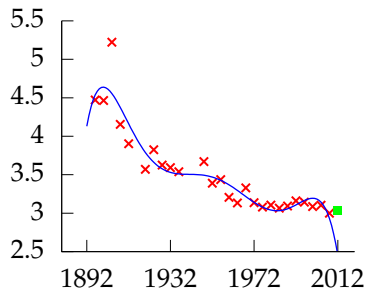
Polynomial order 6, training error -32.237, leave one out error 1.5047.

# Leave One Out Error



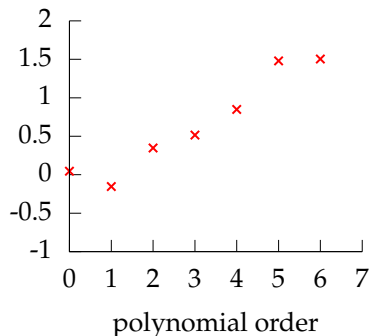
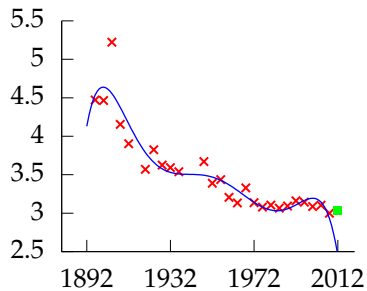
Polynomial order 6, training error -32.237, leave one out error 1.5047.

# Leave One Out Error



Polynomial order 6, training error -32.237, leave one out error 1.5047.

# Leave One Out Error



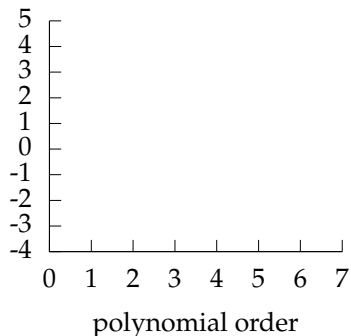
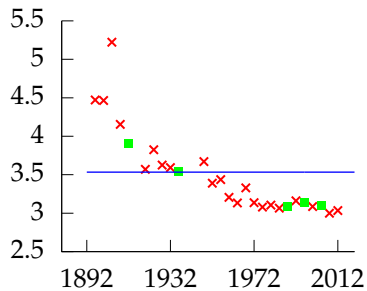
Polynomial order 6, training error -32.237, leave one out error 1.5047.



# $k$ Fold Cross Validation

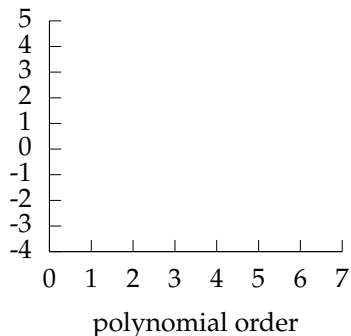
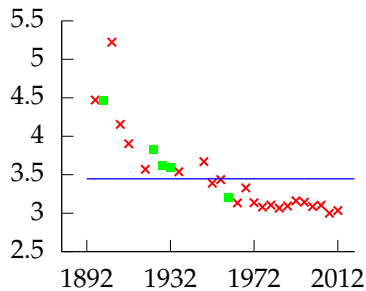
- ▶ Leave one out cross validation can be very time consuming!
- ▶ Need to train your algorithm  $n$  times.
- ▶ An alternative:  $k$  fold cross validation.

# Cross Validation Error



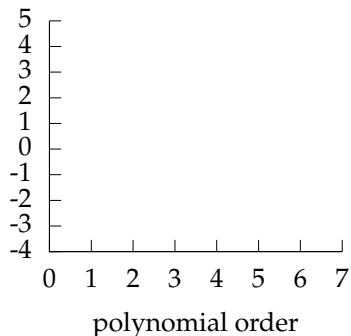
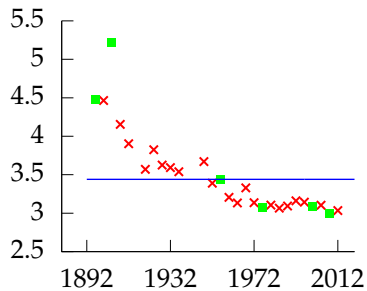
Polynomial order 0, training error -3.2644, leave one out error 0.045811.

# Cross Validation Error



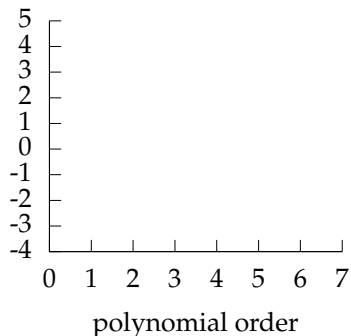
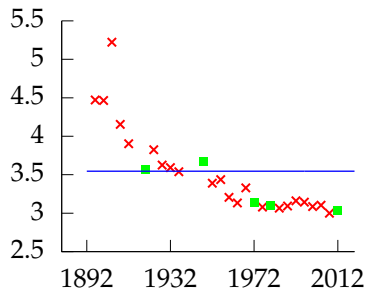
Polynomial order 0, training error -3.2644, leave one out error 0.045811.

# Cross Validation Error



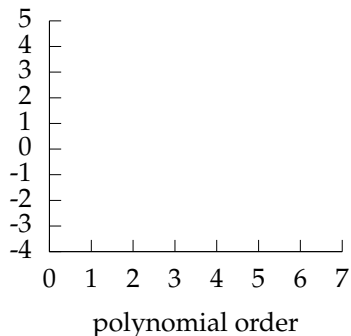
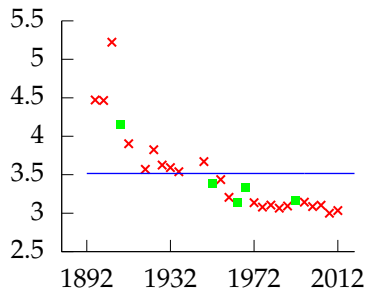
Polynomial order 0, training error -3.2644, leave one out error 0.045811.

# Cross Validation Error



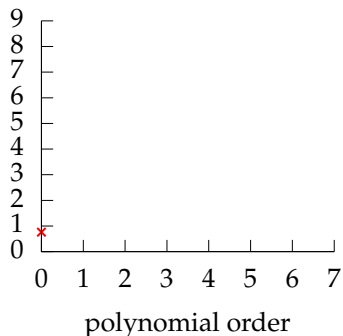
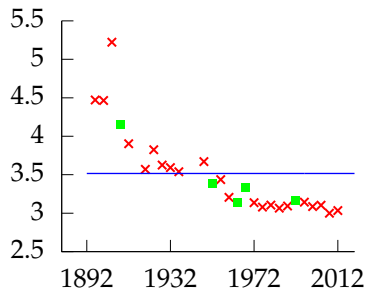
Polynomial order 0, training error -3.2644, leave one out error 0.045811.

# Cross Validation Error



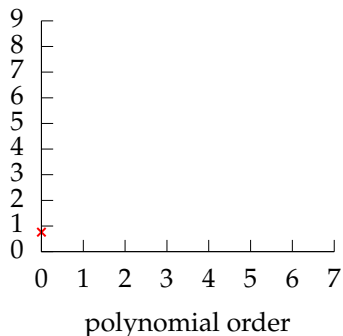
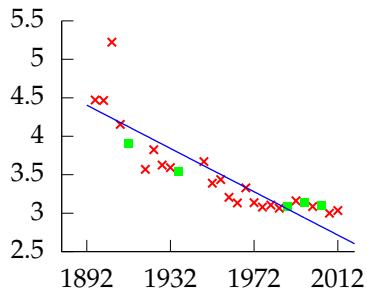
Polynomial order 0, training error -3.2644, leave one out error 0.045811.

# Cross Validation Error



Polynomial order 0, training error -3.2644, leave one out error 0.045811.

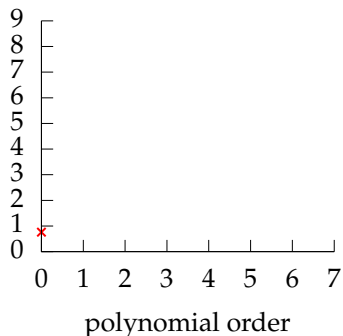
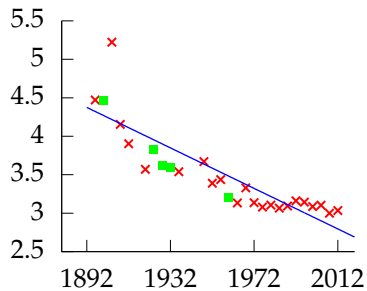
# Cross Validation Error



Polynomial order 1, training error -18.873, leave one out error -0.15413.

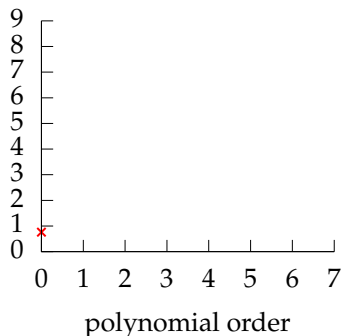
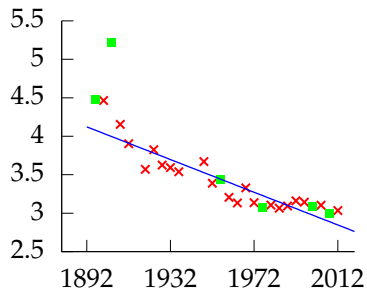


# Cross Validation Error



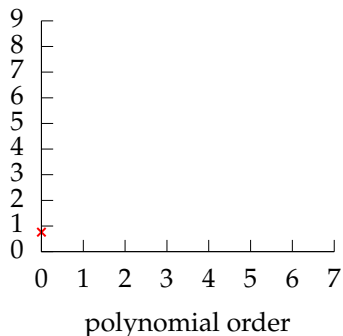
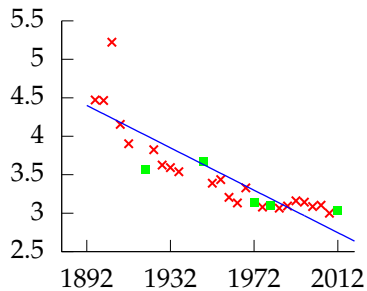
Polynomial order 1, training error -18.873, leave one out error -0.15413.

# Cross Validation Error



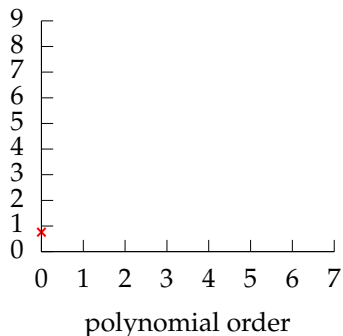
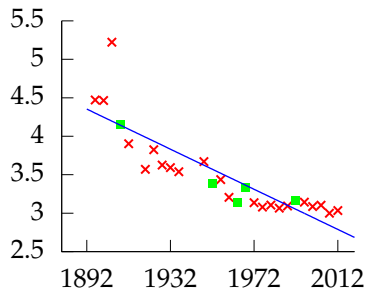
Polynomial order 1, training error -18.873, leave one out error -0.15413.

# Cross Validation Error



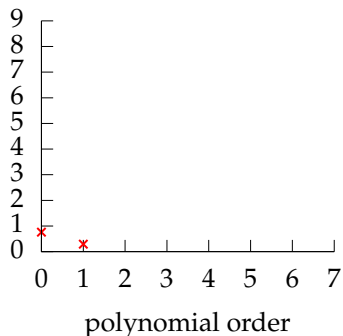
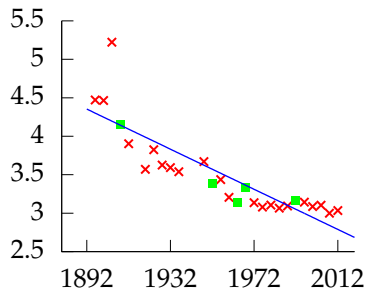
Polynomial order 1, training error -18.873, leave one out error -0.15413.

# Cross Validation Error



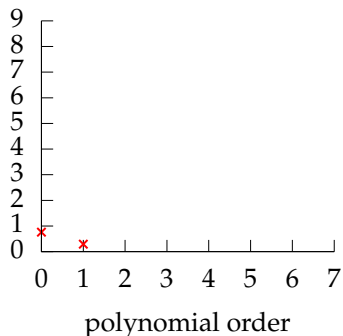
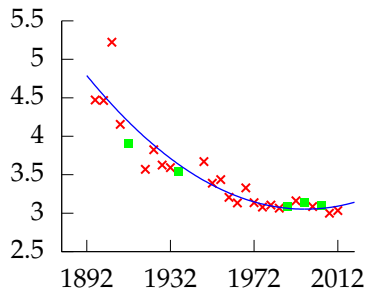
Polynomial order 1, training error -18.873, leave one out error -0.15413.

# Cross Validation Error



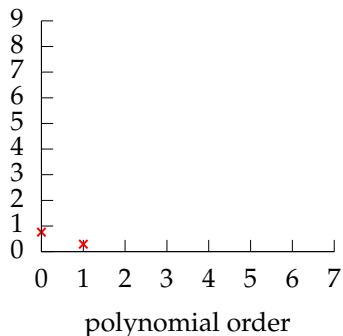
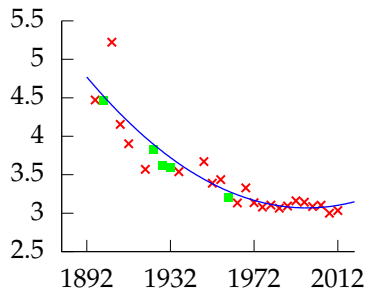
Polynomial order 1, training error -18.873, leave one out error -0.15413.

# Cross Validation Error



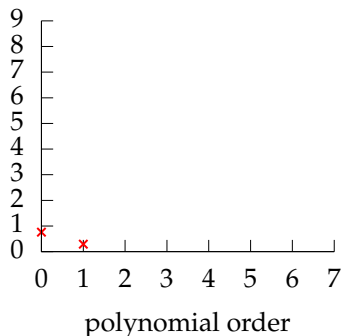
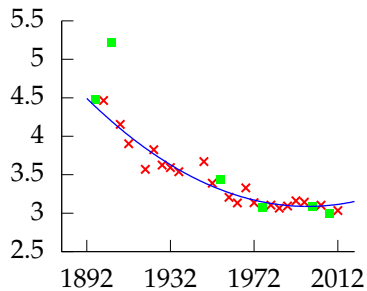
Polynomial order 2, training error -25.177, leave one out error 0.34669.

# Cross Validation Error



Polynomial order 2, training error -25.177, leave one out error 0.34669.

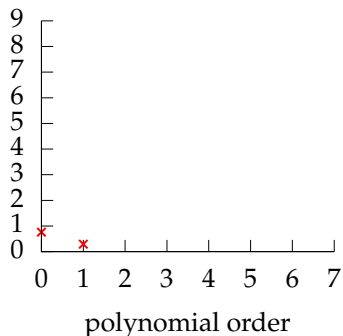
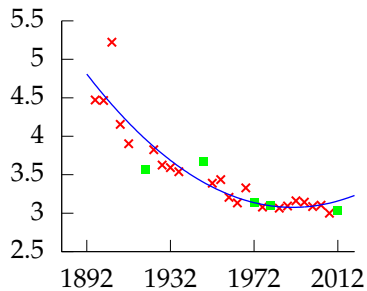
# Cross Validation Error



Polynomial order 2, training error -25.177, leave one out error 0.34669.

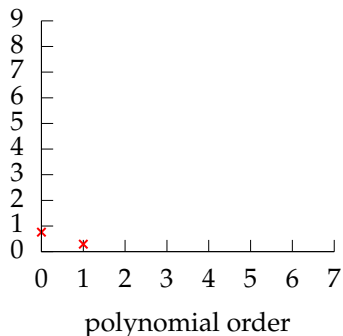
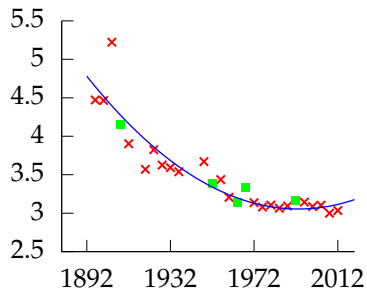


# Cross Validation Error



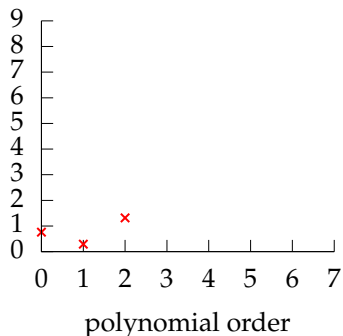
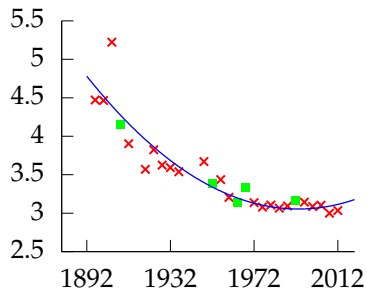
Polynomial order 2, training error -25.177, leave one out error 0.34669.

# Cross Validation Error



Polynomial order 2, training error -25.177, leave one out error 0.34669.

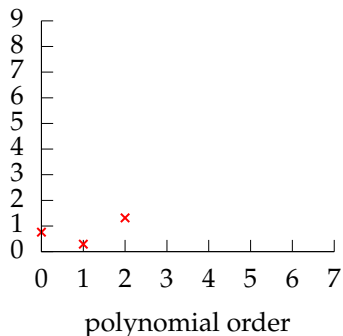
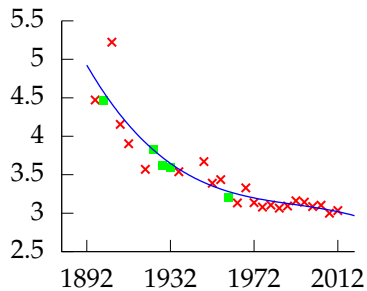
# Cross Validation Error



Polynomial order 2, training error -25.177, leave one out error 0.34669.

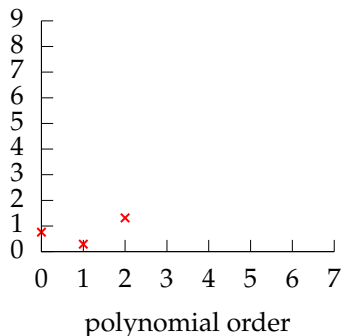
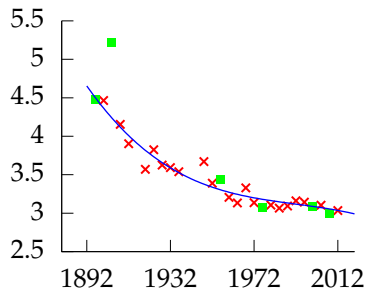


# Cross Validation Error



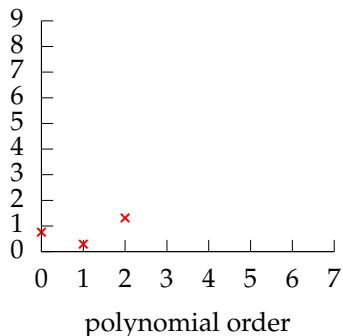
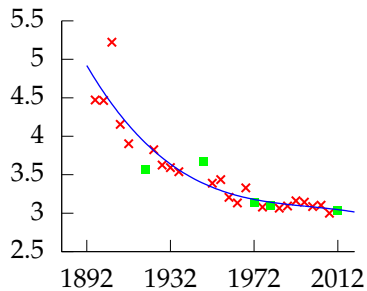
Polynomial order 3, training error -25.777, leave one out error 0.51621.

# Cross Validation Error



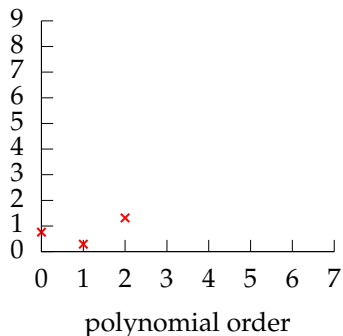
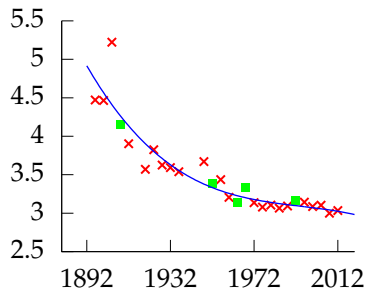
Polynomial order 3, training error -25.777, leave one out error 0.51621.

# Cross Validation Error



Polynomial order 3, training error -25.777, leave one out error 0.51621.

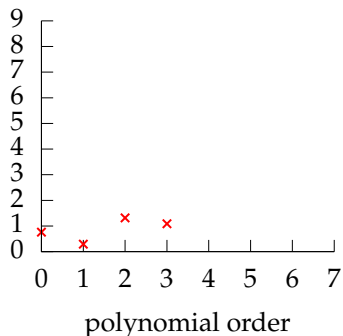
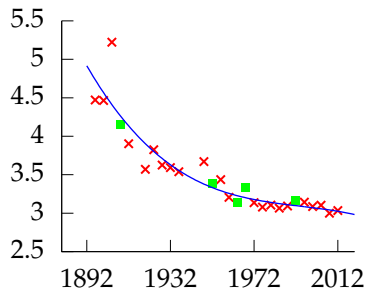
# Cross Validation Error



Polynomial order 3, training error -25.777, leave one out error 0.51621.

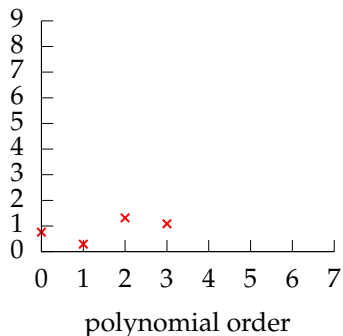
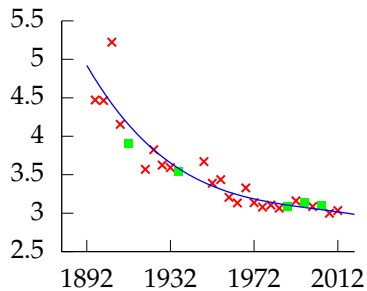


# Cross Validation Error



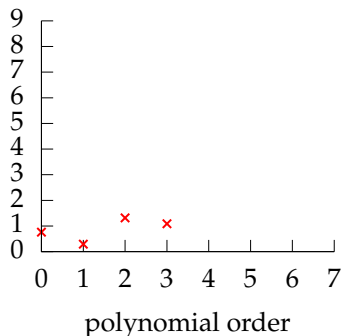
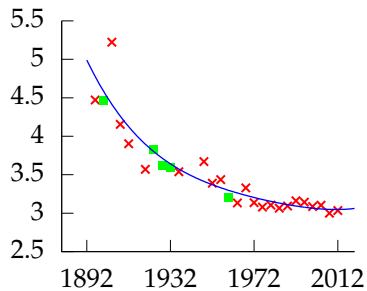
Polynomial order 3, training error -25.777, leave one out error 0.51621.

# Cross Validation Error



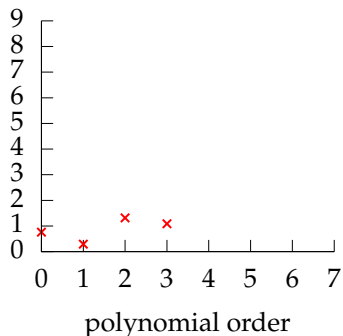
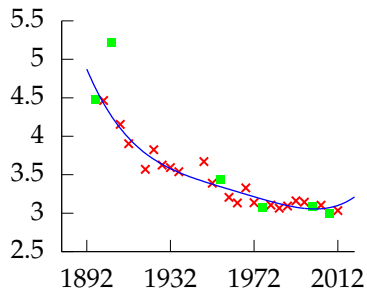
Polynomial order 4, training error -26.048, leave one out error 0.84844.

# Cross Validation Error



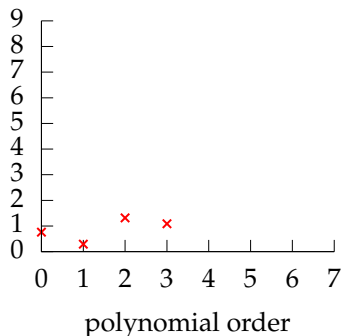
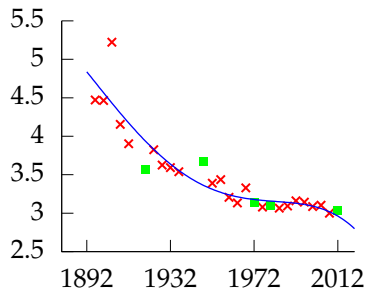
Polynomial order 4, training error -26.048, leave one out error 0.84844.

# Cross Validation Error



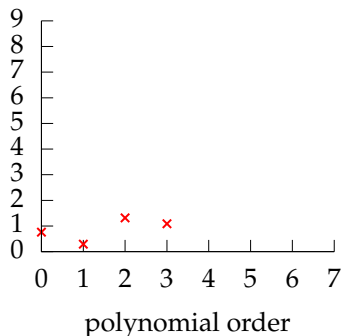
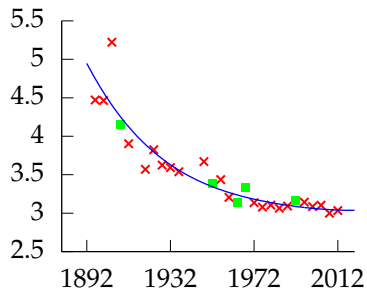
Polynomial order 4, training error -26.048, leave one out error 0.84844.

# Cross Validation Error



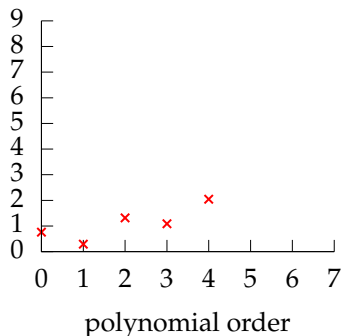
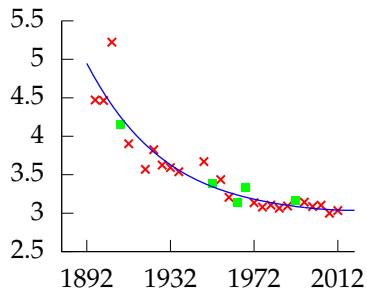
Polynomial order 4, training error -26.048, leave one out error 0.84844.

# Cross Validation Error



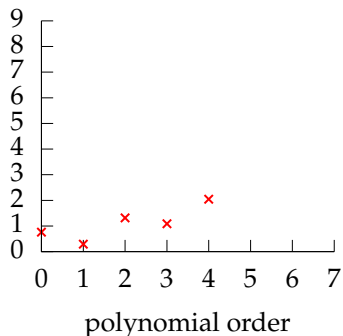
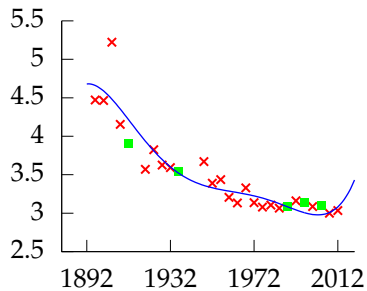
Polynomial order 4, training error -26.048, leave one out error 0.84844.

# Cross Validation Error



Polynomial order 4, training error -26.048, leave one out error 0.84844.

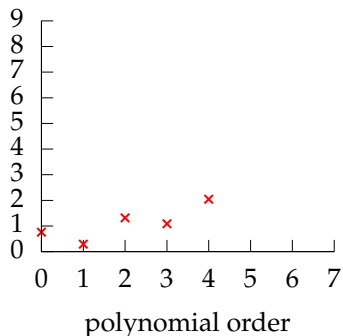
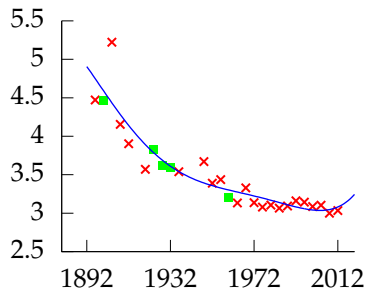
# Cross Validation Error



Polynomial order 5, training error -26.892, leave one out error 1.48.

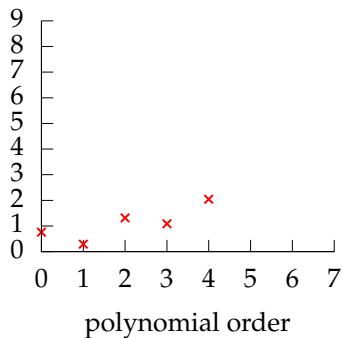
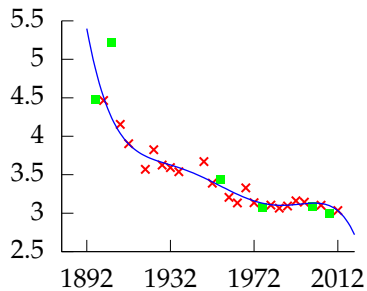


# Cross Validation Error



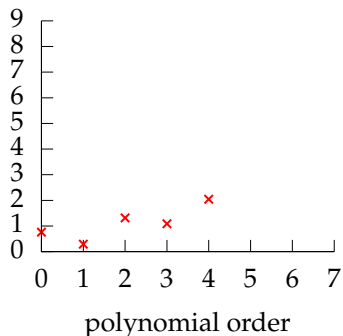
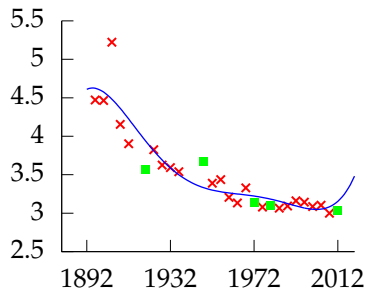
Polynomial order 5, training error -26.892, leave one out error 1.48.

# Cross Validation Error



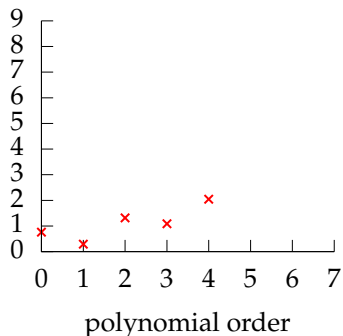
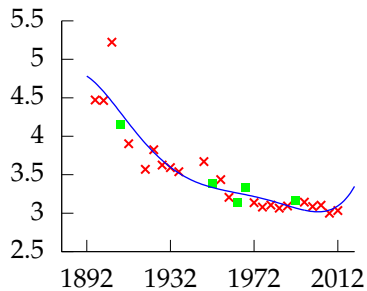
Polynomial order 5, training error -26.892, leave one out error 1.48.

# Cross Validation Error



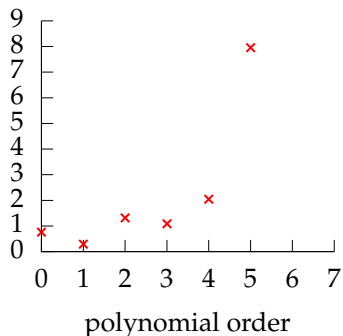
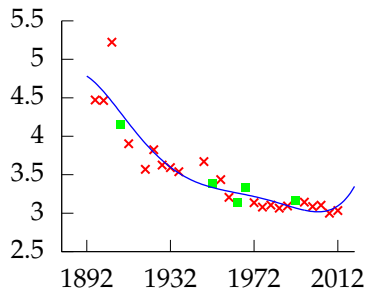
Polynomial order 5, training error -26.892, leave one out error 1.48.

# Cross Validation Error



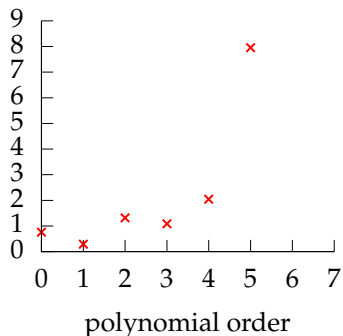
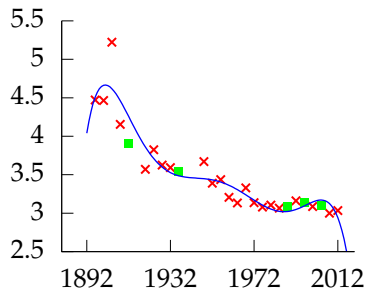
Polynomial order 5, training error -26.892, leave one out error 1.48.

# Cross Validation Error



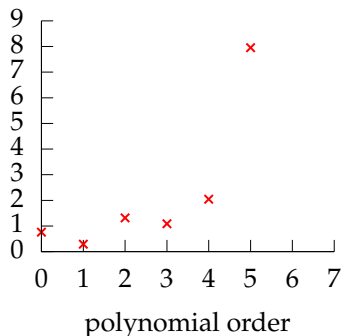
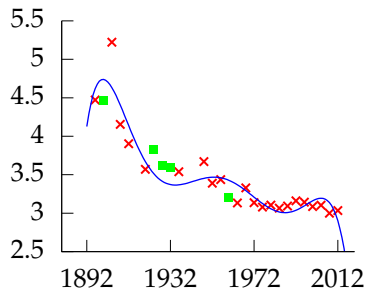
Polynomial order 5, training error -26.892, leave one out error 1.48.

# Cross Validation Error



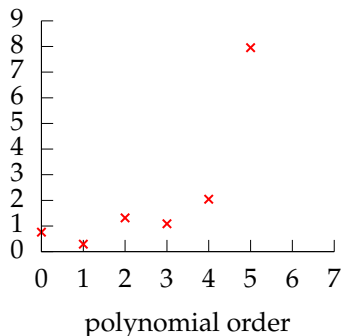
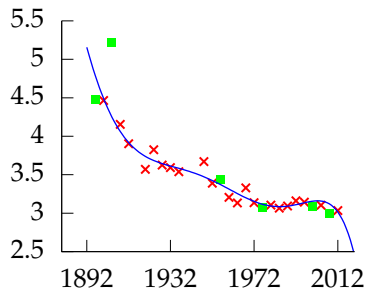
Polynomial order 6, training error -29.395, leave one out error 1.5047.

# Cross Validation Error



Polynomial order 6, training error -29.395, leave one out error 1.5047.

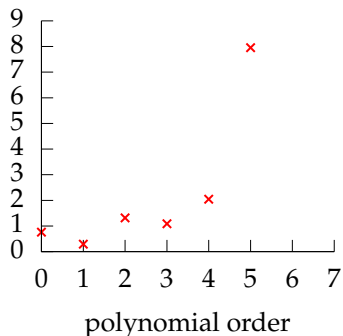
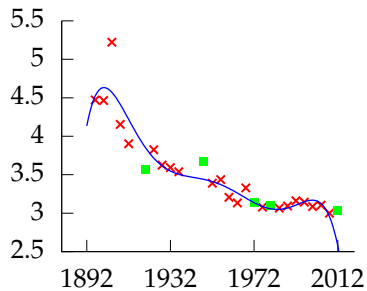
# Cross Validation Error



Polynomial order 6, training error -29.395, leave one out error 1.5047.

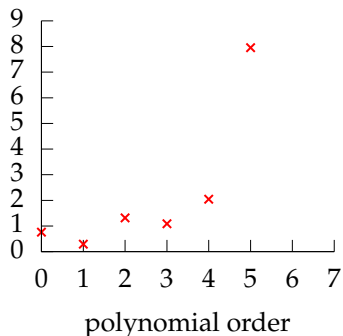
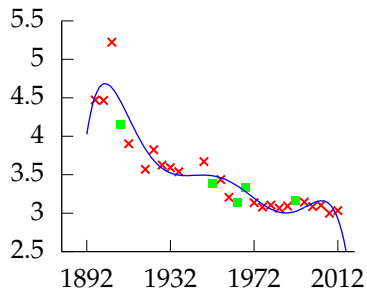


# Cross Validation Error



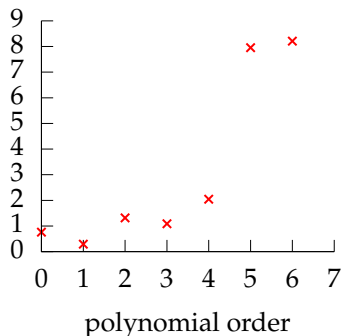
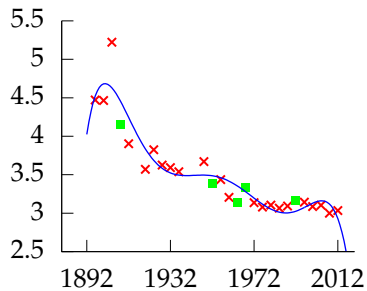
Polynomial order 6, training error -29.395, leave one out error 1.5047.

# Cross Validation Error



Polynomial order 6, training error -29.395, leave one out error 1.5047.

# Cross Validation Error



Polynomial order 6, training error -29.395, leave one out error 1.5047.

- ▶ Section 1.5 of Rogers and Girolami.

# Reading Summary

- ▶ Basis Functions (from last time)
  - ▶ Section 1.4 of Rogers and Girolami.
  - ▶ Chapter 1, pg 1-6 of Bishop.
  - ▶ Chapter 3, Section 3.1 of Bishop up to pg 143.
- ▶ Generalization
  - ▶ Section 1.5 of Rogers and Girolami.

# References I

C. M. Bishop. *Pattern Recognition and Machine Learning*. Springer-Verlag, 2006. [\[Google Books\]](#) .

S. Rogers and M. Girolami. *A First Course in Machine Learning*. CRC Press, 2011. [\[Google Books\]](#) .